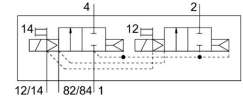
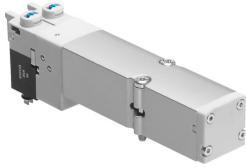


Solenoid valve VMPA2-M1H-D-PI

Part number: 537960

FESTO



[PDF](#) General operating condition

Data sheet

| Feature | Value |
|---|--|
| Valve function | 2x2/2-way, monostable, closed |
| Type of actuation | Electric |
| Valve size | 20 mm |
| Standard nominal flow rate (standardised to DIN 1343) | 650 l/min ... 840 l/min |
| Operating voltage | 24V DC |
| Operating pressure | 0.3 MPa ... 1 MPa |
| Operating pressure | 3 bar ... 10 bar |
| Design | Piston gate valve |
| Type of reset | Pneumatic spring |
| Approval | c UL us - Recognized (OL) |
| Degree of protection | IP65 To IEC 60529 |
| Sealing principle | Soft |
| Mounting position | optional |
| Manual override | Detenting Non-detenting |
| Type of piloting | Pilot actuated |
| Flow direction | Non-reversible |
| Symbol | 00991803 |
| lap | Overlap |
| Signal status display | yes |
| Pilot pressure | 0.3 MPa ... 0.8 MPa |
| Pilot pressure | 3 bar ... 8 bar |
| Suitability for vacuum | no |
| Note on standard nominal flow rate | MPA-L: 840 l/min MPA-S: 650 l/min |
| Standard nominal flow rate with QS-8 | 650 l/min |
| Standard nominal flow rate with QS-10 | 840 l/min |
| Switching time off | 25 ms |
| Switching time on | 7 ms |
| Max. positive test pulse with 0 signal | 400 µs |
| Max. negative test pulse with 1 signal | 900 µs |
| Permissible voltage fluctuations | +/- 25% |
| Operating medium | Compressed air to ISO 8573-1:2010 [7:4:4] |
| Note on operating and pilot medium | Lubricated operation possible (in which case lubricated operation will always be required) |

| Feature | Value |
|---|--|
| Vibration resistance | Transport application test with severity level 2 to FN 942017-4 and EN 60068-2-6 |
| Shock resistance | Shock test with severity level 2 to FN 942017-5 and EN 60068-2-27 |
| Corrosion resistance class CRC | 1 - Low corrosion stress |
| LABS (PWIS) conformity | VDMA24364-B1/B2-L |
| Storage temperature | -20 °C ... 40 °C |
| Media temperature | -5 °C ... 50 °C |
| Relative air humidity | Max. 90% at 40°C |
| Ambient temperature | -5 °C ... 50 °C |
| Max. tightening torque for valve mounting | 0.65 Nm |
| Product weight | 100 g |
| Type of mounting | With through-hole |
| Note on materials | RoHS-compliant |
| Material seals | NBR |
| Material housing | Die-cast aluminium |