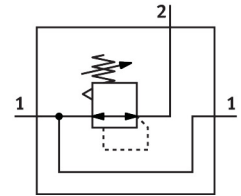
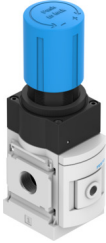


Precision pressure regulator MS6-LRP-1/4-D5-A8

Part number: 538008

FESTO



 [General operating condition](#)

Data sheet

| Feature | Value |
|---|--|
| Size | 6 |
| Series | MS |
| Actuator lock | Rotary knob with detent |
| Mounting position | optional |
| Design | Piloted precision diaphragm control valve |
| Controller function | Output pressure constant With secondary venting |
| Symbol | 00991973 |
| Pressure gauge (ANALOG) or Pressure display (DIGITAL) | Prepared for G1/8 |
| Operating pressure | 0.1 MPa ... 1.4 MPa |
| Operating pressure | 1 bar ... 14 bar |
| Pressure regulation range | 0.1 bar ... 4 bar |
| Max. pressure hysteresis | 0.02 bar |
| Flow rate of secondary exhaust | ≥650 l/min |
| Standard nominal flow rate (standardised to DIN 1343) | ≥1400 l/min |
| Operating medium | Compressed air to ISO 8573-1:2010 [7:4:4] Inert gases |
| Note on operating and pilot medium | Ester oil < 0.1mg/m ³ , according to ISO 8573-1:2010 [---:2] Lubricated operation not possible |
| Corrosion resistance class CRC | 2 - Moderate corrosion stress |
| LABS (PWIS) conformity | VDMA24364-B1/B2-L |
| Storage temperature | -10 °C ... 60 °C |
| Media temperature | -10 °C ... 60 °C |
| Ambient temperature | -10 °C ... 60 °C |
| Product weight | 850 g |
| Type of mounting | Either: Front panel mounting In-line installation With accessories |
| Pneumatic connection, port 1 | G1/4 |
| Pneumatic connection, port 2 | G1/4 |
| Pneumatic connection, port 3 | G1/4 |
| Note on materials | RoHS-compliant |
| Material seals | NBR |
| Material housing | Aluminium |