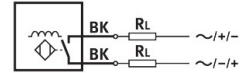
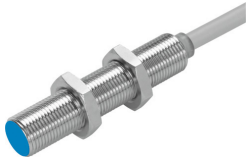



Proximity sensor SIED-M12B-ZS-K-L

Part number: 538272

FESTO



 [General operating condition](#)

Data sheet

Feature	Value
Design	Round
Conforms to standard	EN 60947-5-2
Symbol	00991712
Approval	RCM trademark c UL us listed (OL)
CE mark (see declaration of conformity)	To EU EMC Directive To EU Low Voltage Directive
Measuring principle	Inductive
Rated operating distance	2 mm
Assured operating distance	1.62 mm
Reduction factors	Aluminium = 0.5 Stainless steel St 18/8 = 0.9 Copper = 0.4 Brass = 0.6 Steel St 37 = 1.0
Ambient temperature	-25 °C ... 85 °C
Repetition accuracy	0.1 mm
Switching output	Non-contacting, 2-wire
Switching element function	N/O contact
Hysteresis	0.02 mm ... 0.44 mm
Max. switching frequency DC	1200 Hz
Max. switching frequency AC	25 Hz
Max. output current	200 mA
Voltage drop	≤8 V
Min. load current	5 mA
Short circuit current rating	no
Operational voltage range AC	20 V ... 265 V
Operational voltage range DC	20 V ... 320 V
Mains frequency	50 Hz
No-load supply current	≤1.5 mA
Reverse polarity protection	For all electrical connections
Electrical connection	2-wire Cable
Cable length	2.5 m
Material cable sheath	TPE-U(PUR)
Material insulating sheath	PVC
Size	M12
Type of mounting	Via lock nut

Feature	Value
Tightening torque	10 Nm
Mounting type	Flush
Product weight	90 g
Material housing	Nickel-plated
Switching status indication	Yellow LED
Ambient temperature with moving cable	-5 °C ... 50 °C
Degree of protection	IP67
Corrosion resistance class CRC	1 - Low corrosion stress
LABS (PWIS) conformity	VDMA24364-B2-L
Additional information for sensor selection	For DC and AC voltage
Electrical output	Non-contacting, 2-wire
Selection of sensor design	Standard