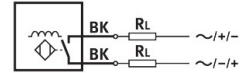
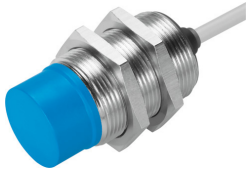


Proximity sensor SIED-M30NB-ZS-K-L

Part number: 538284

FESTO



[General operating condition](#)

Data sheet

Feature	Value
Design	Round
Conforms to standard	EN 60947-5-2
Symbol	00991712
Approval	RCM trademark c UL us listed (OL)
CE mark (see declaration of conformity)	To EU EMC Directive To EU Low Voltage Directive
Measuring principle	Inductive
Rated operating distance	15 mm
Assured operating distance	12.15 mm
Reduction factors	Aluminium = 0.5 Stainless steel St 18/8 = 0.8 Copper = 0.4 Brass = 0.5 Steel St 37 = 1.0
Ambient temperature	-25 °C ... 85 °C
Repetition accuracy	0.4 mm
Switching output	Non-contacting, 2-wire
Switching element function	N/O contact
Hysteresis	0.04 mm ... 3.3 mm
Max. switching frequency DC	220 Hz
Max. switching frequency AC	25 Hz
Max. output current	300 mA
Voltage drop	≤8 V
Min. load current	5 mA
Short circuit current rating	no
Operational voltage range AC	20 V ... 265 V
Operational voltage range DC	20 V ... 320 V
Mains frequency	50 Hz
No-load supply current	≤1.5 mA
Reverse polarity protection	For all electrical connections
Electrical connection	2-wire Cable
Cable length	2.5 m
Material cable sheath	TPE-U(PUR)
Material insulating sheath	PVC
Size	M30
Type of mounting	Via lock nut

Feature	Value
Tightening torque	30 Nm
Mounting type	Not flush
Product weight	190 g
Material housing	Nickel-plated
Switching status indication	Yellow LED
Ambient temperature with moving cable	-5 °C ... 50 °C
Degree of protection	IP67
Corrosion resistance class CRC	1 - Low corrosion stress
LABS (PWIS) conformity	VDMA24364-B2-L
Additional information for sensor selection	For DC and AC voltage
Electrical output	Non-contacting, 2-wire
Selection of sensor design	Standard