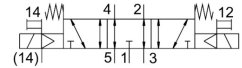
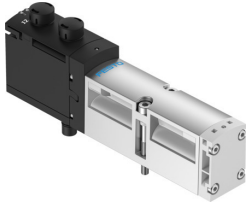


# Solenoid valve VSVA-B-P53E-ZD-A1-1T1L

Part number: 539161

FESTO



General operating condition

## Data sheet

| Feature   | Value  |
|---|--|
| Valve function  | 5/3 exhausted  |
| Type of actuation                                     | Electric   |
| Construction width                                    | 26 mm  |
| Standard nominal flow rate (standardised to DIN 1343) | 1000 l/min   |
| pneumatic working port                                | Sub-base size 26 mm to ISO 15407-1<br>Sub-base size 01 to VDMA 24563<br>G1/4 |
| Operating voltage                                     | 24V DC   |
| Operating pressure                                    | -0.09 MPa ... 1 MPa  |
| Operating pressure                                    | -0.9 bar ... 10 bar  |
| Design  | Piston gate valve  |
| Approval  | c UL us - Recognized (OL)  |
| Degree of protection                                  | IP65<br>NEMA 4   |
| Exhaust-air function                                  | With flow control option<br>Via throttle plate<br>Via individual sub-base    |
| Sealing principle                                     | Soft   |
| Mounting position                                     | optional   |
| Manual override                                       | Detenting<br>Non-detenting<br>Covered  |
| Type of piloting                                      | Pilot actuated   |
| Pilot air supply                                      | External<br>Internal   |
| Flow direction  | optional   |
| Symbol  | 00992939   |
| lap   | Overlap  |
| Signal status display                                 | LED  |
| Pilot pressure  | 0.3 MPa ... 1 MPa  |
| Pilot pressure  | 3 bar ... 10 bar   |
| Flow rate of valve                                    | 1400 l/min   |
| Flow rate of valve on individual sub-base             | 1200 l/min   |
| Valve flow rate, pneumatically linked, flow optimized | 1350 l/min   |
| Flow rate of pneumatically interlinked valve          | 1000 l/min   |
| Switching time off                                    | 65 ms  |
| Switching time on                                     | 22 ms  |
| Duty cycle  | 100%   |

| Feature                                | Value  |
|--|--|
| Max. positive test pulse with 0 signal | 1200 µs  |
| Max. negative test pulse with 1 signal | 1100 µs  |
| Max. current consumption               | 72 mA  |
| Nominal operating voltage DC           | 24 V   |
| Characteristic coil data               | 24 V DC: 1.6 W   |
| Immunity to surge                      | 2.5 kV   |
| Pollution degree                       | 3  |
| Permissible voltage fluctuations       | +/- 10 %   |
| Operating medium                       | Compressed air to ISO 8573-1:2010 [7:4:4]  |
| Note on operating and pilot medium     | Lubricated operation possible (in which case lubricated operation will always be required) |
| Vibration resistance                   | Transport application test with severity level 2 to FN 942017-4 and EN 60068-2-6           |
| Shock resistance                       | Shock test with severity level 2 to FN 942017-5 and EN 60068-2-27                          |
| Corrosion resistance class CRC         | 0 - No corrosion stress  |
| LABS (PWIS) conformity                 | VDMA24364-B1/B2-L  |
| Relative air humidity                  | 0 - 90%  |
| Pilot medium                           | Compressed air to ISO 8573-1:2010 [7:4:4]  |
| Ambient temperature                    | -5 °C ... 50 °C  |
| Product weight                         | 320 g  |
| Electrical connection                  | Plug-in<br>To ISO 15407-2  |
| Type of mounting                       | On sub-base  |
| Pilot air port 12/14                   | Sub-base size 26 mm to ISO 15407-2   |
| Pilot exhaust port 82/84               | Ducted<br>Not ducted as per standard<br>Either:  |
| Pneumatic connection, port 1           | Sub-base size 26 mm to ISO 15407-2   |
| Pneumatic connection, port 2           | Sub-base size 26 mm to ISO 15407-2   |
| Pneumatic connection, port 3           | Sub-base size 26 mm to ISO 15407-2   |
| Pneumatic connection, port 4           | Sub-base size 26 mm to ISO 15407-2   |
| Pneumatic connection, port 5           | Sub-base size 26 mm to ISO 15407-2   |
| Note on materials                      | RoHS-compliant   |
| Material seals                         | FPM<br>HNBR<br>NBR   |
| Material housing                       | Die-cast aluminium<br>PA   |
| Material screws                        | Galvanised steel   |