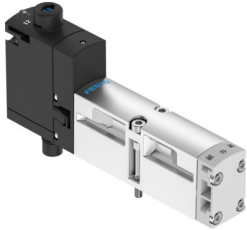


Solenoid valve

VSVA-B-M52-AZD-A2-1T1L

FESTO

Part number: 539184



 [General operating condition](#)

Data sheet

| Feature | Value |
|---|--|
| Valve function | 5/2-way, monostable |
| Type of actuation | Electric |
| Construction width | 18 mm |
| Standard nominal flow rate (standardised to DIN 1343) | 550 l/min |
| pneumatic working port | Sub-base size 18 mm to ISO 15407-1 Sub-base size 02 to VDMA 24563 G1/8 |
| Operating voltage | 24V DC |
| Operating pressure | -0.09 MPa ... 1 MPa |
| Operating pressure | -0.9 bar ... 10 bar |
| Design | Piston gate valve |
| Type of reset | Pneumatic spring |
| Approval | c UL us - Recognized (OL) |
| Degree of protection | IP65 NEMA 4 |
| Exhaust-air function | With flow control option Via throttle plate Via individual sub-base |
| Sealing principle | Soft |
| Mounting position | optional |
| Manual override | Detenting Non-detenting Covered |
| Type of piloting | Pilot actuated |
| Pilot air supply | External Internal |
| Flow direction | optional |
| Symbol | 00991050 |
| lap | Overlap |
| Signal status display | LED |
| Pilot pressure | 0.3 MPa ... 1 MPa |
| Pilot pressure | 3 bar ... 10 bar |
| Flow rate of valve | 750 l/min |
| Flow rate of valve on individual sub-base | 600 l/min |
| Valve flow rate, pneumatically linked, flow optimized | 700 l/min |
| Flow rate of pneumatically interlinked valve | 550 l/min |
| Switching time off | 28 ms |
| Switching time on | 22 ms |

| Feature | Value |
|--|--|
| Duty cycle | 100% |
| Max. positive test pulse with 0 signal | 1500 µs |
| Max. negative test pulse with 1 signal | 800 µs |
| Max. current consumption | 72 mA |
| Nominal operating voltage DC | 24 V |
| Characteristic coil data | 24 V DC: 1.6 W |
| Immunity to surge | 2.5 kV |
| Pollution degree | 3 |
| Permissible voltage fluctuations | +/- 10 % |
| Operating medium | Compressed air to ISO 8573-1:2010 [7:4:4] |
| Note on operating and pilot medium | Lubricated operation possible (in which case lubricated operation will always be required) |
| Vibration resistance | Transport application test with severity level 2 to FN 942017-4 and EN 60068-2-6 |
| Shock resistance | Shock test with severity level 2 to FN 942017-5 and EN 60068-2-27 |
| Corrosion resistance class CRC | 0 - No corrosion stress |
| LABS (PWIS) conformity | VDMA24364-B1/B2-L |
| Relative air humidity | 0 - 90% |
| Pilot medium | Compressed air to ISO 8573-1:2010 [7:4:4] |
| Ambient temperature | -5 °C ... 50 °C |
| Product weight | 163 g |
| Electrical connection | Plug-in To ISO 15407-2 |
| Type of mounting | On sub-base |
| Pilot air port 12/14 | Sub-base size 18 mm to ISO 15407-2 |
| Pilot exhaust port 82/84 | Ducted Not ducted as per standard Either: |
| Pneumatic connection, port 1 | Sub-base size 18 mm to ISO 15407-2 |
| Pneumatic connection, port 2 | Sub-base size 18 mm to ISO 15407-2 |
| Pneumatic connection, port 3 | Sub-base size 18 mm to ISO 15407-2 |
| Pneumatic connection, port 4 | Sub-base size 18 mm to ISO 15407-2 |
| Pneumatic connection, port 5 | Sub-base size 18 mm to ISO 15407-2 |
| Note on materials | RoHS-compliant |
| Material seals | FPM HNBR NBR |
| Material housing | Die-cast aluminium PA |
| Material screws | Galvanised steel |