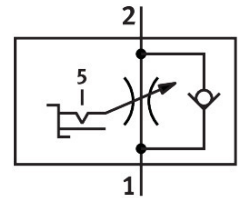


One-way flow control valve GRLSA-1/8-QS-6

Part number: 540661

FESTO



 General operating condition

Data sheet

Feature	Value
Valve function	Exhaust air one-way flow control function
Pneumatic connection, port 1	QS-6
Pneumatic connection, port 2	G1/8
Type of actuation	Manual
Adjustment component	Internal hexagon
Type of mounting	Screw-in
Standard nominal flow rate in flow control direction	0 l/min ... 250 l/min
Standard nominal flow rate in blocked direction	180 l/min ... 310 l/min
Ambient temperature	-10 °C ... 60 °C
Mounting position	optional
Symbol	00991475
Operating pressure complete temperature range	0.2 bar ... 10 bar
Standard flow rate in flow control direction 0.6->0 MPa (6->0 bar, 87->0 psi)	0 l/min ... 410 l/min
Standard flow rate in non-return direction 0.6->0 MPa (6->0 bar, 87->0 psi)	430 l/min ... 540 l/min
Operating medium	Compressed air to ISO 8573-1:2010 [7:4:4]
Note on operating and pilot medium	Lubricated operation possible (in which case lubricated operation will always be required)
LABS (PWIS) conformity	VDMA24364-B2-L
Cleanroom class	Class 4 according to ISO 14644-1
Storage temperature	-10 °C ... 40 °C
Media temperature	-10 °C ... 60 °C
Nominal torque	3.5 Nm
Tolerance for nominal tightening torque	± 20%
Product weight	19.5 g
Material seals	NBR
Material hollow bolt	Wrought aluminium alloy Anodised
Material release ring	POM
Material adjusting screw	PA-reinforced
Material swivel fitting	Die-cast zinc