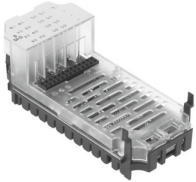


Input module CPX-8DE-D

Part number: 541480

FESTO



 [General operating condition](#)

Data sheet

Feature	Value
Dimensions (W x L x H)	50 x 107 x 50 mm
Product weight	45 g
Ambient temperature	-5 °C ... 50 °C
Storage temperature	-20 °C ... 70 °C
Degree of protection	Dependent on the manifold block
Corrosion resistance class CRC	1 - Low corrosion stress (when installed)
LABS (PWIS) conformity	VDMA24364-B2-L
Material housing	PC
LED display	1 Group diagnostics 8 channel diagnostics 8 Channel status
Diagnosis	Short circuit/overload per channel
Parameterisation	Input debounce time Signal extension time Behaviour after short circuit Module monitoring
Operational voltage range DC	18 V ... 30 V
Nominal operating voltage DC	24 V
Intern power consumption nominal operating voltage	Typ. 15 mA
Number of inputs	8
Characteristic for inputs	IEC1131-T2
Switching level	Signal 0: ≤ 5 V Signal 1: ≥ 11 V
Switching logic for inputs	PNP (positive switching)
Input debounce time	3 ms (0.1 ms, 10 ms, 20 ms, parameterisable)
Max. residual current of inputs per module	0.7 A
Isolation channel - channel	no
Isolation channel - internal bus	no
Fuse protection (short circuit)	Internal electronic fuse per channel