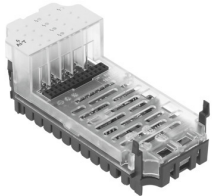


# Analogue module CPX-4AE-T

Part number: 541486

FESTO



 General operating condition

## Data sheet

Feature	Value
Dimensions (W x L x H)	50 x 107 x 50 mm
Product weight	47 g
Ambient temperature	-5 °C ... 50 °C
Storage temperature	-20 °C ... 70 °C
Degree of protection	Dependent on the manifold block
Corrosion resistance class CRC	1 - Low corrosion stress (when installed)
Max. cable length	200 m Shielded
LABS (PWIS) conformity	VDMA24364-B2-L
Material housing	PC
LED display	1 Group diagnostics 4 channel diagnostics
Diagnosis	Wire break per channel Limit value violation per channel Short circuit, input signal Parameterisation error
Parameterisation	Forcing per channel Limit monitoring per channel Unit of measurement Measured value smoothing Sensor type per channel Wire break monitoring per channel
Internal cycle time	250 ms
Operational voltage range DC	18 V ... 30 V
Nominal operating voltage DC	24 V
Intern power consumption nominal operating voltage	Typ. 50 mA
Number of inputs	4
Data format	15 bits + prefix Binary notation in tenths of a degree
Repetition accuracy	0.05% at 25°C
Basic error limit at 25 °C	±0.6 K for Pt sensors
Operating error limit related to the ambient temperature range	±0.6%
Sensor type	Ni 100 Ni 1000 Ni 120 Ni 500 Pt 100 Pt 1000 Pt 200 Pt 500

<b>Feature</b>	<b>Value</b>
Isolation channel - channel	no
Isolation channel - internal bus	yes
Fuse protection (short circuit)	Internal electronic fuse