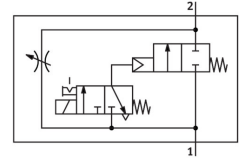


Soft start valve MS12-DE-G-V24

Part number: 541498

FESTO



 General operating condition

Data sheet

Feature	Value
Exhaust-air function	With flow control option
Type of actuation	Electric
Mounting position	optional
Manual override	Detenting Non-detenting
Design	Piston seat
Type of reset	Mechanical spring
Type of piloting	Pilot actuated
Pilot air supply	Internal
Flow direction	Non-reversible
Symbol	00991501
Valve function	2/2
Switching position indicator	With accessories
Operating pressure	3 bar ... 16 bar
Standard nominal flow rate (standardised to DIN 1343)	25000 l/min ... 42000 l/min
Duty cycle	100%
Characteristic coil data	24 V DC: 8.4 W 42 V AC: 50 Hz, pick-up power 14.0 VA, holding power 10.0 VA 42 V AC: 60 Hz, pick-up power 12.0 VA, holding power 7.0 VA
Operating medium	Compressed air to ISO 8573-1:2010 [-:-:-]
Corrosion resistance class CRC	2 - Moderate corrosion stress
LABS (PWIS) conformity	VDMA24364-B1/B2-L
Media temperature	-10 °C ... 50 °C
Degree of protection	IP65
Ambient temperature	-10 °C ... 50 °C
Product weight	3800 g
Electrical connection	To DIN EN 175301-803 Square design
Signal status display	With accessories
Type of mounting	Either: In-line installation With accessories
Pneumatic connection, port 1	Manifold module
Pneumatic connection, port 2	Manifold module
Material seals	NBR
Material housing	Die-cast aluminium