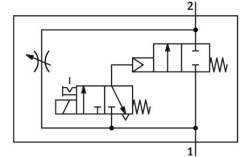


Soft start valve MS4-DE-1/4-10V24

Part number: 542558

FESTO



 General operating condition

Data sheet

Feature	Value
Type of actuation	Electric
Mounting position	optional
Manual override	Detenting Non-detenting
Design	Piston seat
Type of reset	Mechanical spring
Type of piloting	Pilot actuated
Pilot air supply	Internal
Flow direction	Non-reversible
Symbol	00991501
Valve function	2/2
Switching position indicator	With accessories
Operating pressure	4 bar ... 10 bar
b value	0.45
C value	9.6 l/sbar
Standard nominal flow rate (standardised to DIN 1343)	2000 l/min
Duty cycle	100%
Characteristic coil data	24 V DC: 1.8 W
Approval	c UL us - Recognized (OL)
Operating medium	Compressed air to ISO 8573-1:2010 [7:4:4] Inert gases
Note on operating and pilot medium	Lubricated operation possible (in which case lubricated operation will always be required)
Corrosion resistance class CRC	2 - Moderate corrosion stress
LABS (PWIS) conformity	VDMA24364-B1/B2-L
Suitable for use with food	See supplementary material information
Media temperature	-10 °C ... 50 °C
Degree of protection	IP65
Ambient temperature	-10 °C ... 50 °C
Product weight	263 g
Electrical connection	Type C Plugs To DIN EN 175301-803 Square design
Signal status display	With accessories

Feature	Value
Type of mounting	Either: In-line installation With accessories
Pneumatic connection, port 1	G1/4
Pneumatic connection, port 2	G1/4
Note on materials	RoHS-compliant
Material seals	NBR
Material housing	Die-cast aluminium