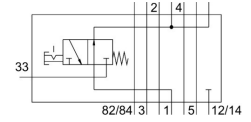
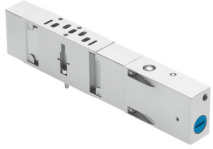


Vertical pressure shut-off plate VABF-S3-2-L1D1-C

FESTO

Part number: 543601



 General operating condition

Data sheet

Feature	Value
Construction width	18 mm
Based on standard	ISO 15407-1
Mounting position	optional
Vertical pneumatic linkage	Shut-off for 1
Symbol	00991889
Operating pressure	-0.9 bar ... 10 bar
Standard nominal flow rate (standardised to DIN 1343)	400 l/min
Operating medium	Compressed air to ISO 8573-1:2010 [7:4:4]
Note on operating and pilot medium	Lubricated operation possible (in which case lubricated operation will always be required)
Corrosion resistance class CRC	0 - No corrosion stress
LABS (PWIS) conformity	VDMA24364-B1/B2-L
Degree of protection	IP65 NEMA 4
Ambient temperature	-5 °C ... 50 °C
Product weight	212 g
Mounting with vertical stacking	On manifold sub-base On individual sub-base
Note on materials	RoHS-compliant
Material housing	Die-cast aluminium