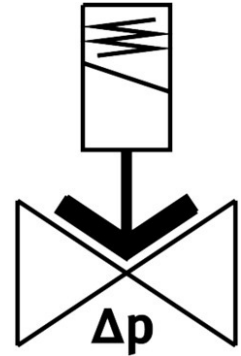


# Solenoid valve VZWM-L-M22C-G14-F4

Part number: 546146

FESTO



 General operating condition

## Data sheet

| Feature                                  | Value   |
|--|---|
| Design                                   | servo-controlled  |
| Type of actuation                        | Electric  |
| Sealing principle                        | Soft  |
| Mounting position                        | Preferably vertical   |
| Type of mounting                         | In-line installation  |
| Connection Process valve                 | G1/4  |
| Electrical connection                    | Solenoid coil type MD-... , coil can be ordered as an accessory                     |
| Nominal size                             | 13.5 mm   |
| Valve function                           | 2/2-way, closed, monostable   |
| Flow direction                           | Non-reversible  |
| Medium                                   | Compressed air to ISO 8573-1:2010 [7:4:4]<br>Inert gases<br>Water<br>Neutral fluids |
| Medium pressure, valve for liquid media  | 0.05 MPa ... 0.6 MPa  |
| Medium pressure, valve for liquid media  | 0.5 bar ... 6 bar   |
| Medium pressure, valve for liquid media  | 7.25 psi ... 87 psi   |
| Medium pressure, valve for gaseous media | 0.05 MPa ... 1 MPa  |
| Medium pressure, valve for gaseous media | 0.5 bar ... 10 bar  |
| Medium pressure, valve for gaseous media | 7.25 psi ... 145 psi  |
| Burst pressure                           | 4 MPa   |
| Burst pressure                           | 40 bar  |
| Burst pressure                           | 580 psi   |
| Overload pressure                        | 4 MPa   |
| Overload pressure                        | 40 bar  |
| Overload pressure                        | 580 psi   |
| Pressure difference                      | 0.05 MPa  |
| Pressure difference                      | 0.5 bar   |
| Pressure difference                      | 7.25 psi  |
| Type of piloting                         | Pilot actuated  |

| Feature   | Value                    |
|---|--------------------------|
| Symbol  | 00995681                 |
| Max. viscosity  | 22 mm <sup>2</sup> /s    |
| Media temperature                                     | -10 °C ... 60 °C         |
| Media temperature for fluids                          | 5 °C ... 50 °C           |
| Ambient temperature                                   | -10 °C ... 60 °C         |
| Flow rate Kv  | 1.6 m <sup>3</sup> /h    |
| Standard nominal flow rate (standardised to DIN 1343) | 1400 l/min               |
| Switching time on                                     | 8 ms                     |
| Switch-on time for fluids                             | 100 ms                   |
| Switching time off                                    | 10 ms                    |
| Switch-off time for fluids                            | 200 ms                   |
| b value   | 0.3                      |
| C value   | 6 l/sbar                 |
| Note on materials                                     | RoHS-compliant           |
| LABS (PWIS) conformity                                | VDMA24364 zone III       |
| Material housing                                      | Brass                    |
| Material number housing                               | 2.0402                   |
| Material seals  | NBR                      |
| Material plunger tube                                 | High-alloy steel         |
| Product weight  | 500 g                    |
| Corrosion resistance class CRC                        | 1 - Low corrosion stress |
| Max. tightening torque for cover screw                | 20 Nm                    |
| Max. tightening torque for connecting thread          | 35 Nm                    |
| Max. tightening torque for coil fastening             | 0.5 Nm                   |