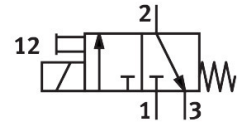
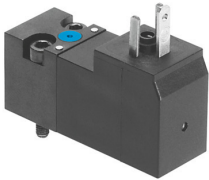



Solenoid valve VSCS-B-M32-MH-WA-1C1

Part number: 546256

FESTO



 [General operating condition](#)

Data sheet

Feature	Value
Valve function	3/2-way, closed, monostable
Type of actuation	Electric
Construction width	15 mm
Standard nominal flow rate (standardised to DIN 1343)	18 l/min
pneumatic working port	Sub-base size 15 mm to ISO 15218
Operating voltage	24V DC
Operating pressure	0 MPa ... 1 MPa
Operating pressure	0 bar ... 10 bar
Operating pressure	0 psi ... 145 psi
Type of reset	Mechanical spring
Approval	c UL us - Recognized (OL)
Degree of protection	IP65
Sealing principle	Soft
Mounting position	optional
Conforms to standard	ISO 15218
Manual override	Non-detenting
Type of piloting	Direct
Flow direction	Non-reversible
Symbol	00991308
lap	Underlap
Note on forced dynamization	Switching frequency min. 1/week
Switching time off	6 ms
Switching time on	6 ms
Duty cycle	100%
Max. positive test pulse with 0 signal	1800 µs
Max. negative test pulse with 1 signal	800 µs
Characteristic coil data	24 V DC: 1.8 W
Permissible voltage fluctuations	-15%/+10%
Operating medium	Compressed air to ISO 8573-1:2010 [7:4:4]
Note on operating and pilot medium	Lubricated operation possible (in which case lubricated operation will always be required)
Vibration resistance	Transport application test with severity level 2 to FN 942017-4 and EN 60068-2-6
Shock resistance	Shock test with severity level 2 to FN 942017-5 and EN 60068-2-27
Corrosion resistance class CRC	2 - Moderate corrosion stress
LABS (PWIS) conformity	VDMA24364-C1-L

Feature	Value
Media temperature	-10 °C ... 50 °C
Ambient temperature	-10 °C ... 50 °C
Electrical connection	Type C To DIN EN 175301-803
Pneumatic connection, port 1	Sub-base
Pneumatic connection, port 2	Sub-base
Pneumatic connection, port 3	Sub-base
Note on materials	RoHS-compliant
Material seals	NBR