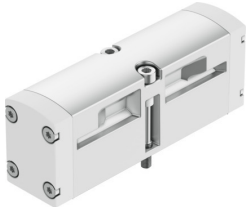


Pneumatic valve VSPA-B-B52-A1

Part number: 546714

FESTO



[PDF](#) General operating condition

Data sheet

| Feature | Value |
|-------------------------------------------------------|--------------------------------------------------------------------------------------------|
| Valve function | 5/2 bistable |
| Type of actuation | Pneumatic |
| Construction width | 26 mm |
| Standard nominal flow rate (standardised to DIN 1343) | 1100 l/min |
| pneumatic working port | Sub-base size 26 mm to ISO 15407-1 Sub-base size 01 to VDMA 24563 G1/4 |
| Operating pressure | -0.9 bar ... 16 bar |
| Design | Piston gate valve |
| Nominal size | 9 mm |
| Exhaust-air function | With flow control option |
| Sealing principle | Soft |
| Mounting position | optional |
| Conforms to standard | ISO 15407-1 VDMA 24563 |
| Type of piloting | Direct |
| Flow direction | Reversible |
| Symbol | 00991037 |
| lap | Overlap |
| Pilot pressure | 2 bar ... 10 bar |
| Flow rate of valve | 1400 l/min |
| Flow rate of valve on individual sub-base | 1100 l/min |
| Flow rate of pneumatically interlinked valve | 1100 l/min |
| Switching time reversal | 10 ms |
| Explosion protection | Zone 2 (ATEX) Zone 22 (ATEX) |
| Operating medium | Compressed air to ISO 8573-1:2010 [7:4:4] |
| Note on operating and pilot medium | Lubricated operation possible (in which case lubricated operation will always be required) |
| Corrosion resistance class CRC | 0 - No corrosion stress |
| LABS (PWIS) conformity | VDMA24364-B1/B2-L |
| Media temperature | -10 °C ... 60 °C |
| Relative air humidity | 0 - 90% |
| Pilot medium | Compressed air to ISO 8573-1:2010 [7:4:4] |
| Ambient temperature | -10 °C ... 60 °C |
| Max. tightening torque for valve mounting | 1.8 Nm ... 2.2 Nm |
| Product weight | 180 g |

| Feature | Value |
|------------------------------|------------------------------------|
| Pilot air port 12 | Sub-base size 26 mm to ISO 15407-1 |
| Pilot air port 14 | Sub-base size 26 mm to ISO 15407-1 |
| Pneumatic connection, port 1 | Sub-base size 26 mm to ISO 15407-1 |
| Pneumatic connection, port 2 | Sub-base size 26 mm to ISO 15407-1 |
| Pneumatic connection, port 3 | Sub-base size 26 mm to ISO 15407-1 |
| Pneumatic connection, port 4 | Sub-base size 26 mm to ISO 15407-1 |
| Pneumatic connection, port 5 | Sub-base size 26 mm to ISO 15407-1 |
| Note on materials | RoHS-compliant |
| Material seals | NBR |
| Material housing | Die-cast aluminium |
| Material screws | Steel Galvanised |