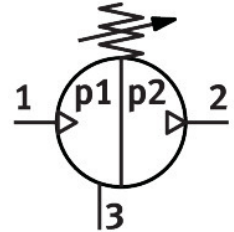
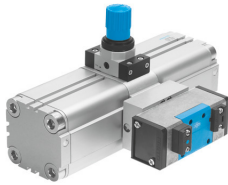



# Pressure booster DPA-63-10-A

Part number: 549399

FESTO



 General operating condition

## Data sheet

Feature	Value
Piston diameter	63 mm
Mounting position	optional
Design	Twin-piston pressure booster With piston magnet
Symbol	00991432
Pressure gauge (ANALOG) or Pressure display (DIGITAL)	Prepared for G1/8
Output pressure 2	0.4 MPa ... 1 MPa
Output pressure 2	4 bar ... 10 bar
Output pressure 2	58 psi ... 145 psi
Operating pressure	0.2 MPa ... 0.8 MPa
Operating pressure	2 bar ... 8 bar
Operating pressure	29 psi ... 116 psi
Pressure regulation range	0.4 MPa ... 1 MPa
Pressure regulation range	4 bar ... 10 bar
Pressure regulation range	58 psi ... 145 psi
Inlet pressure 1	2 bar ... 8 bar
Inlet pressure 1	0.2 MPa ... 0.8 MPa
Inlet pressure 1	29 psi ... 116 psi
Note on pressure regulation range	If the controller spring is tensioned to the maximum, the maximum output pressure can be exceeded by 40%.
Operating medium	Compressed air to ISO 8573-1:2010 [7:3:4]
Note on operating and pilot medium	Lubricated operation not possible
Corrosion resistance class CRC	2 - Moderate corrosion stress
LABS (PWIS) conformity	VDMA24364-B1/B2-L
Storage temperature	5 °C ... 60 °C
Ambient temperature	5 °C ... 60 °C
Product weight	6000 g
Type of mounting	Via female thread
Pneumatic connection, port 1	G3/8
Pneumatic connection, port 2	G3/8
Pneumatic connection, port 3	G3/8
Note on materials	RoHS-compliant