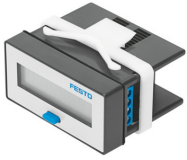


Adding counter CCES-P-C8-E

Part number: 549403

FESTO



 General operating condition

Data sheet

Feature	Value
Design	Electric adding counter with battery
Type of reset	Pushbutton or electric signal
Display	8-digit
Max. counting rate	7.5 kHz
Max. attenuated counting rate	30 Hz
Min. pulse length drive	15 ms
Min. pulse length reset	15 ms
Upper threshold value DC	5 V ... 30 V
Power supply	Lithium battery
Lower threshold value DC	<0.7 V
CE mark (see declaration of conformity)	To EU EMC Directive
UKCA marking (see declaration of conformity)	To UK instructions for EMC
Corrosion resistance class CRC	2 - Moderate corrosion stress
LABS (PWIS) conformity	VDMA24364-B1/B2-L
Ambient temperature	-10 °C ... 50 °C
Product weight	30 g
Clock pulse input setting	Negative edge 30 Hz
Clock pulse input (input)	Programmable
Type of mounting	Front panel mounting
Note on materials	RoHS-compliant
Material housing	PC