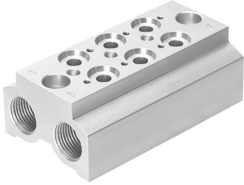


Manifold block CPE14-3/2-PRS-3/8-3

Part number: 550560

FESTO



 General operating condition

Data sheet

| Feature | Value |
|---|-------------------------------|
| Grid dimension | 20 mm |
| Mounting position | optional |
| Max. number of valve positions | 3 |
| Max. number of pressure zones | 2 |
| Burst pressure | 5 MPa |
| Burst pressure | 50 bar |
| Burst pressure | 725 psi |
| Operating pressure | -0.09 MPa ... 1 MPa |
| Operating pressure | -0.9 bar ... 10 bar |
| Corrosion resistance class CRC | 2 - Moderate corrosion stress |
| LABS (PWIS) conformity | VDMA24364-B1/B2-L |
| Media temperature | -5 °C ... 50 °C |
| Ambient temperature | -5 °C ... 50 °C |
| Max. tightening torque for valve mounting | 1.2 Nm |
| Product weight | 228 g |
| Type of mounting in-line valve manifold | With through-hole |
| Mounting method for valve | Via female thread |
| Pneumatic connection, port 1 | G3/8 |
| Pneumatic connection, port 3 | G3/8 |
| Pneumatic connection, port 5 | G3/8 |
| Note on materials | RoHS-compliant |
| Material manifold rail | Wrought aluminium alloy |