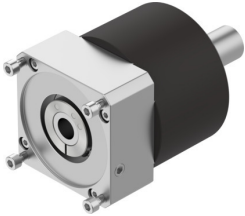


Gear unit EMGA-160-P-G5-SAS-140

Part number: 552201

FESTO



 [General operating condition](#)

Data sheet

Feature	Value
Gear unit flange size	160 mm
Motor flange size	140 mm
Torsional backlash	0.1 deg
Type of gear unit	Planetary gear
Gear unit ratio	5:1
Max. drive speed	6500 rpm
Operating temperature of gear unit	-25 °C ... 90 °C
LABS (PWIS) conformity	VDMA24364-B2-L
Degree of protection	IP54
Continuous output torque	450 Nm
Mass moment of inertia of gear unit	6.07 kgcm ²
Max. output torque	720 Nm
Max. efficiency	98 %
Torsional rigidity	38 Nm/arcmin
Product weight	18000 g
Gear unit interface, output shaft	160G
Gear unit interface, drive shaft	140A
Note on materials	RoHS-compliant