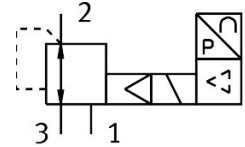


Proportional-pressure regulator VPPE-3-1-1/8-2-420-E1T

FESTO

Part number: 557779



General operating condition

Data sheet

| Feature | Value |
|---|--|
| Nominal size, supply | 5 mm |
| Nominal size, exhaust | 2.5 mm |
| Type of actuation | Electric |
| Sealing principle | Soft |
| Mounting position | optional Preferably vertical |
| Design | Piloted diaphragm regulator |
| Short circuit current rating | For all electrical connections |
| Safety instructions | Safety position VPPE: if the power supply cable is interrupted, output pressure is maintained unregulated. |
| Symbol | 00995303 |
| Reverse polarity protection | For all electrical connections |
| Type of reset | Mechanical spring |
| Type of piloting | Pilot actuated |
| Valve function | 3-way proportional pressure regulator |
| Display type | LED indicator 3-digit |
| Pressure regulation range | 0.002 MPa ... 0.2 MPa |
| Pressure regulation range | 0.02 bar ... 2 bar |
| Inlet pressure 1 | 3 bar ... 4 bar |
| Inlet pressure 1 | 0.3 MPa ... 0.4 MPa |
| Max. pressure hysteresis | 0.002 MPa |
| Max. pressure hysteresis | 0.02 bar |
| Max. pressure hysteresis | 0.29 psi |
| Standard nominal flow rate (standardised to DIN 1343) | 310 l/min |
| Operational voltage range DC | 21.6 V ... 26.4 V |
| Max. current consumption | 160 mA |
| Duty cycle | 100% |
| Max. electrical power consumption | 4.2 W |
| Residual ripple | 10 % |
| Switching output | PNP |
| Signal range analogue output | 4 - 20 mA |
| Signal range analogue input | 4 - 20 mA |
| Operating medium | Compressed air to ISO 8573-1:2010 [7:4:4] Inert gases |
| Note on operating and pilot medium | Lubricated operation not possible |

| Feature | Value |
|--|---|
| Approval | RCM trademark c UL us listed (OL) |
| KC mark | KC-EMV |
| CE mark (see declaration of conformity) | To EU EMC Directive In accordance with EU RoHS Directive |
| UKCA marking (see declaration of conformity) | To UK instructions for EMC To UK RoHS instructions |
| Certificate issuing authority | UL E322346 |
| Corrosion resistance class CRC | 2 - Moderate corrosion stress |
| LABS (PWIS) conformity | VDMA24364-B2-L |
| Media temperature | 10 °C ... 50 °C |
| Degree of protection | IP65 |
| Ambient temperature | 0 °C ... 60 °C |
| Product weight | 390 g |
| Linearity | 1 %FS |
| Hysteresis | 1 %FS |
| Reproducibility | 0.5 %FS |
| Total accuracy | 1.5%FS |
| Temperature coefficient | 0.04 %/K |
| Electrical connection | 5-pin M12 Plugs |
| Type of mounting | With through-hole |
| Pneumatic connection, port 1 | G1/8 |
| Pneumatic connection, port 2 | G1/8 |
| Pneumatic connection, port 3 | G1/8 |
| Note on materials | RoHS-compliant |
| Material housing | Anodised wrought aluminium alloy |