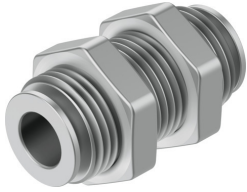


Push-in bulkhead connector NPQM-H-Q8-E-P10

Part number: 558808

FESTO



 General operating condition

Data sheet

Feature	Value
Size	Standard
Nominal size	7 mm
Design	Bulkhead
Size of pack	10
Design	Push-pull principle
Operating pressure complete temperature range	-0.095 MPa ... 1.6 MPa
Operating pressure complete temperature range	-0.95 bar ... 16 bar
Operating pressure complete temperature range	-13.775 psi ... 232 psi
Operating medium	Compressed air to ISO 8573-1:2010 [7:-:-]
Note on operating and pilot medium	Lubricated operation possible
Corrosion resistance class CRC	1 - Low corrosion stress
LABS (PWIS) conformity	VDMA24364-B1/B2-L
Ambient temperature	-20 °C ... 70 °C
Product weight	39.5 g
Pneumatic connection, port 1	For tubing outer diameter of 8 mm
Pneumatic connection, port 2	For tubing outside diameter of 8 mm
Note on materials	RoHS-compliant
Material housing	Brass, nickel-plated
Material nut	Nickel-plated brass
Material tubing seal	NBR