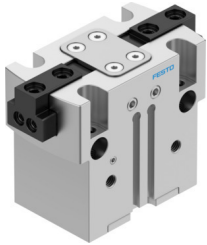


Parallel gripper HGPT-25-A-B-G1

Part number: 560205

FESTO



 [General operating condition](#)

Data sheet

| Feature | Value |
|----------------------------------------------|--------------------------------------------------------------------------------------------|
| Size | 25 |
| Stroke per gripper jaws | 6 mm |
| Max. replacement accuracy | ≤0.2 mm |
| Max. angular gripper jaw backlash ax, ay | ≤0.1 deg |
| Max. gripper jaw backlash Sz | ≤0.02 mm |
| Rotationally symmetrical | ≤0.2 mm |
| Repetition accuracy, gripper | ≤0.04 mm |
| Number of gripper jaws | 2 |
| Drive system | Pneumatic |
| Mounting position | optional |
| Mode of operation | Double-acting |
| Gripper function | Parallel |
| Gripper force back-up | During opening |
| Design | Force pilot operated motion sequence |
| Position detection | Via proximity switch |
| Symbol | 00995947 |
| Operating pressure | 4 bar ... 8 bar |
| Operating pressure of blocked air | 0 bar ... 0.5 bar |
| Max. operating frequency of gripper | ≤3 Hz |
| Min. opening time at 0.6 MPa (6 bar, 87 psi) | 24 ms |
| Min. closing time at 0.6 MPa (6 bar, 87 psi) | 48 ms |
| Max. mass per external gripper finger | 110 g |
| Operating medium | Compressed air to ISO 8573-1:2010 [7:4:4] |
| Note on operating and pilot medium | Lubricated operation possible (in which case lubricated operation will always be required) |
| Corrosion resistance class CRC | 2 - Moderate corrosion stress |
| LABS (PWIS) conformity | VDMA24364-B1/B2-L |
| Degree of protection | IP40 |
| Ambient temperature | 5 °C ... 60 °C |
| Mass moment of inertia | 1.479 kgcm ² |
| Max. force on gripper jaw Fz static | 1200 N |
| Max. torque at gripper Mx static | 50 Nm |
| Max. torque at gripper My static | 45 Nm |
| Max. torque at gripper Mz static | 35 Nm |
| Lubrication interval for guide components | 5 MioCyc |

| Feature | Value |
|-----------------------------------|---------------------------------------------------------------------------------------------------------------------------------------------------------------|
| Product weight | 353 g |
| Type of mounting | Either: Via female thread and centring sleeve Via through-hole and centring sleeve Via through-hole and dowel pin Via female thread and dowel pin |
| Pneumatic connection, blocked air | M5 |
| Pneumatic connection | M5 |
| Note on materials | RoHS-compliant |
| Material cover cap | High-alloy stainless steel |
| Material housing | Anodised aluminium |
| Material gripper jaws | Hardened steel |