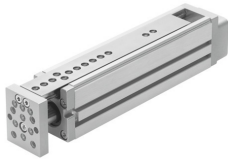


Mini slide EGSL-BS-45-100-3P

Part number: 562225

FESTO



[PDF](#) General operating condition

Data sheet

Feature	Value
Working stroke	100 mm
Size	45
Running parallelism along Z-axis	0.04 mm
Parallelism	0.05 mm
Reversing backlash theoretical	≤50 μm
Spindle diameter	10 mm
Spindle pitch	3 mm/U
Mounting position	optional
Guide	Ball bearing cage guide
Design	Electric mini slide Guidance With ball screw drive
Type of motor	Stepper motor Servo motor
Spindle type	Ball screw drive
Symbol	00992069
Position detection	Via proximity switch
Max. acceleration	25 m/s ²
Max. speed	0.3 m/s
Repetition accuracy	±0.015 mm
Duty cycle	100%
Corrosion resistance class CRC	0 - No corrosion stress
LABS (PWIS) conformity	VDMA24364 zone III
Sound pressure level	60 dB(A)
Degree of protection	IP40
Ambient temperature	0 °C ... 60 °C
Continuous feed force	100 N
Max. drive torque	0.205 Nm
Max. force F _y	631 N
Max. force F _z	631 N
Max. moment M _x	18.6 Nm
Max. moment M _y	16.3 Nm
Max. moment M _z	16.3 Nm
Max. radial force at drive shaft	120 N
Max. feed force F _x	150 N
Frictional torque independent of load	0.09 Nm

Feature	Value
Reference value effective load, horizontal	6 kg
Reference value effective load, vertical	6 kg
Mass moment of inertia JL per kg of working load	0.0023 kgcm ²
Mass moment of inertia JO	0.0459 kgcm ²
Feed constant	3 mm/U
Maintenance interval	Life-time lubrication
Moving mass	640 g
Product weight	1540 g
Type of mounting	Via female thread Via centring sleeve With accessories
Note on materials	RoHS-compliant
Material cover	Die-cast aluminium Painted
Material guide rail	Rolled steel
Material housing	Anodised
Material yoke plate	Wrought aluminium alloy Anodised
Material spindle nut	Rolled steel
Material spindle	Rolled steel