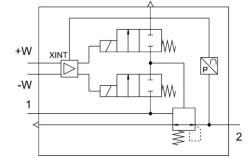


# Pressure regulator MS12-LR-G-PE6

Part number: 564888

FESTO



General operating condition

## Data sheet

Feature	Value
Size	12
Series	MS
Mounting position	optional
Design	Piloted diaphragm regulator
Controller function	Output pressure constant Via primary pressure compensation With secondary venting With return flow function
Symbol	00991856
Pressure gauge (ANALOG) or Pressure display (DIGITAL)	With pressure gauge
Operating pressure	0.115 MPa ... 0.8 MPa
Operating pressure	1.15 bar ... 8 bar
Pressure regulation range	0.15 bar ... 6 bar
Max. pressure hysteresis	0.004 MPa
Max. pressure hysteresis	0.04 bar
Max. pressure hysteresis	0.58 psi
Flow rate of secondary exhaust	≤600 l/min
Standard nominal flow rate (standardised to DIN 1343)	12000 l/min ... 21000 l/min
Operational voltage range DC	21.6 V ... 26.4 V
Max. electrical power consumption	3.6 W
Max. current consumption	0.15 A
Nominal operating voltage DC	24 V
Residual ripple	10 %
Signal range analogue input	0 - 10 V
KC mark	KC-EMV
CE mark (see declaration of conformity)	To EU EMC Directive In accordance with EU RoHS Directive
UKCA marking (see declaration of conformity)	To UK instructions for EMC To UK RoHS instructions
Operating medium	Compressed air to ISO 8573-1:2010 [7:4:4] Inert gases
Corrosion resistance class CRC	2 - Moderate corrosion stress
LABS (PWIS) conformity	VDMA24364-B1/B2-L
Storage temperature	-10 °C ... 60 °C
Media temperature	10 °C ... 50 °C
Degree of protection	IP65

<b>Feature</b>	<b>Value</b>
Ambient temperature	10 °C ... 50 °C
Product weight	4000 g
Type of mounting	Either: In-line installation Via mounting bracket
Pneumatic connection, port 1	Sub-base
Pneumatic connection, port 2	Sub-base
Material covering	PA
Note on materials	RoHS-compliant
Material underneath cover	Wrought aluminium alloy
Material seals	NBR
Material spring	Spring steel
Material housing	Die-cast aluminium
Material membrane	NBR
Material valve stem	Wrought aluminium alloy NBR High-alloy stainless steel