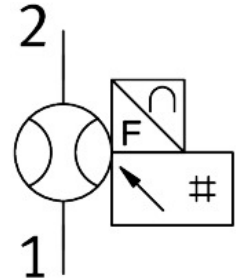


Flow sensor SFAM-62-1000L-M-2SV-M12

Part number: 564932

FESTO



 General operating condition

Data sheet

Feature	Value
Symbol	00992242 00997566
Approval	RCM trademark c UL us - Recognized (OL)
CE mark (see declaration of conformity)	To EU EMC Directive In accordance with EU RoHS Directive
UKCA marking (see declaration of conformity)	To UK instructions for EMC To UK RoHS instructions
Certificate issuing authority	UL E322346
Note on materials	RoHS-compliant
Measured variable	Volume Volumetric flow rate
Flow direction	Unidirectional From left to right
Measuring principle	Thermal
Measurement method	Heat Loss
Start value for flow rate measuring range	10 l/min
End value for flow rate measuring range	1000 l/min
Operating pressure	1.6 MPa
Operating pressure	16 bar
Operating pressure	232 psi
Overload pressure	2 MPa
Overload pressure	20 bar
Overload pressure	290 psi
Operating medium	Compressed air to ISO 8573-1:2010 [7:4:4] Nitrogen
Media temperature	0 °C ... 50 °C
Ambient temperature	0 °C ... 50 °C
Nominal temperature	23 °C
Accuracy of flow rate	± (3% o.m.v. + 0.3% FS)
Repetition accuracy offset in ± %FS	0.2 %FS
Repetition accuracy span in ± %FS	0.8 %FS
Temperature coefficient span in ± %FS/K	Typ. 0.1%FS/K

Feature	Value
Pressure influence span in \pm %FS/bar	0.5 %FS/b.
Switching output	2 x PNP or 2 x NPN, switchable
Switching function	Window comparator or threshold value comparator, adjustable
Switching element function	N/C or N/O contact, switchable
Max. output current	100 mA
Analogue output	0 - 10 V
Flow characteristic curve start value	0 l/min
Flow characteristic curve end value	1000 l/min
Output characteristic curve start value	0 V
Output characteristic curve end value	10 V
Min. load resistance voltage output	10 kOhm
Short circuit current rating	yes
Overload protection	Available
Operational voltage range DC	15 V ... 30 V
Reverse polarity protection	For all electrical connections
Electrical connection 1, connection type	Plugs
Electrical connection 1, connector system	M12x1, A-coded to EN 61076-2-101
Electrical connection 1, number of connections/cores	5
Electrical connection 1, type of mounting	Screw-type lock
Electrical connection 1, compatible type of mounting	Compatible with rotatable screw-type lock
Electrical connection 1, connection pattern	00995383
Max. cable length	30 m
Type of mounting	On service unit
Mounting position	Horizontal
Pneumatic connection	Manifold module
Product weight	600 g
Material housing	Die-cast aluminium PA-reinforced
Display type	Illuminated LCD, multi-colour
Displayable units	l l/min m ³ scf scfm
Setting options	Teach-in Via display and keys
Protection against tampering	PIN code
Setting range threshold value	1 % ... 100 %
Setting range hysteresis	0 % ... 90 %
Degree of protection	IP65
Pressure drop	<100 mbar
Protection class	III
Corrosion resistance class CRC	2 - Moderate corrosion stress
LABS (PWIS) conformity	VDMA24364-B1/B2-L