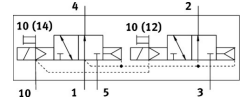
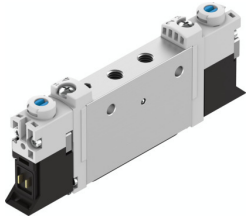


# Solenoid valve

## VUVG-L10-T32U-AZT-M5-1P3

FESTO

Part number: 566464



 [General operating condition](#)

## Data sheet

| Feature   | Value  |
|---|--|
| Valve function  | 2x3/2-way, open, monostable  |
| Type of actuation                                     | Electric   |
| Valve size  | 10 mm  |
| Standard nominal flow rate (standardised to DIN 1343) | 150 l/min  |
| pneumatic working port                                | M5   |
| Operating voltage                                     | 24V DC   |
| Operating pressure                                    | 0.15 MPa ... 1 MPa   |
| Operating pressure                                    | 1.5 bar ... 10 bar   |
| Design  | Piston gate valve  |
| Type of reset   | Pneumatic spring   |
| Approval  | RCM trademark<br>c UL us - Recognized (OL)                                   |
| Degree of protection                                  | IP40<br>IP65<br>With plug socket   |
| Nominal size  | 2.7 mm   |
| Exhaust-air function                                  | With flow control option   |
| Sealing principle                                     | Soft   |
| Mounting position                                     | optional   |
| Manual override                                       | Detenting<br>Non-detenting<br>Covered  |
| Type of piloting                                      | Pilot actuated   |
| Pilot air supply                                      | External   |
| Symbol  | 00992926   |
| lap   | Overlap  |
| Pilot pressure  | 0.15 MPa ... 0.8 MPa   |
| Pilot pressure  | 1.5 bar ... 8 bar  |
| Suitability for vacuum                                | no   |
| Switching time off                                    | 15 ms  |
| Switching time on                                     | 6 ms   |
| Duty cycle  | 100%   |
| Max. positive test pulse with 0 signal                | 700 µs   |
| Max. negative test pulse with 1 signal                | 900 µs   |
| Characteristic coil data                              | 24 V DC: 1.0 W<br>24 V DC: low-current phase 0.3 W, high-current phase 1.0 W |
| Permissible voltage fluctuations                      | +/- 10 %   |

| Feature  | Value  |
|--|--|
| Operating medium                                     | Compressed air to ISO 8573-1:2010 [7:4:4]  |
| Note on operating and pilot medium                   | Lubricated operation possible (in which case lubricated operation will always be required) |
| Vibration resistance                                 | Transport application test with severity level 2 to FN 942017-4 and EN 60068-2-6           |
| Restrictions for environmental and media temperature | -5 ... 50° C<br>Without holding current reduction  |
| Shock resistance                                     | Shock test with severity level 2 to FN 942017-5 and EN 60068-2-27                          |
| Corrosion resistance class CRC                       | 2 - Moderate corrosion stress  |
| LABS (PWIS) conformity                               | VDMA24364-B1/B2-L  |
| Cleanroom class                                      | Class 5 according to ISO 14644-1   |
| Media temperature                                    | -5 °C ... 60 °C  |
| Pilot medium   | Compressed air to ISO 8573-1:2010 [7:4:4]  |
| Ambient temperature                                  | -5 °C ... 60 °C  |
| Product weight                                       | 55 g   |
| Electrical connection                                | Via electrical sub-base  |
| Type of mounting                                     | Either:<br>On manifold rail<br>With through-hole   |
| Pilot air port 12/14                                 | M3   |
| Pneumatic connection, port 1                         | M5   |
| Pneumatic connection, port 2                         | M5   |
| Pneumatic connection, port 3                         | M5   |
| Pneumatic connection, port 4                         | M5   |
| Pneumatic connection, port 5                         | M5   |
| Note on materials                                    | RoHS-compliant   |
| Material seals                                       | HNBR<br>NBR  |
| Material housing                                     | Wrought aluminium alloy  |