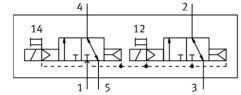
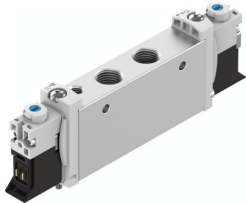


# Solenoid valve

## VUVG-L14-T32C-AT-G18-1P3

FESTO

Part number: 566496



[PDF General operating condition](#)

## Data sheet

Feature	Value
Valve function	2x3/2-way, monostable, closed
Type of actuation	Electric
Valve size	14 mm
Standard nominal flow rate (standardised to DIN 1343)	560 l/min
pneumatic working port	G1/8
Operating voltage	24V DC
Operating pressure	0.15 MPa ... 0.8 MPa
Operating pressure	1.5 bar ... 8 bar
Design	Piston gate valve
Type of reset	Pneumatic spring
Approval	RCM trademark c UL us - Recognized (OL)
Degree of protection	IP40 IP65 With plug socket
Nominal size	4.6 mm
Exhaust-air function	With flow control option
Sealing principle	Soft
Mounting position	optional
Manual override	Detenting Non-detenting Covered
Type of piloting	Pilot actuated
Pilot air supply	Internal
Symbol	00992904
lap	Overlap
Pilot pressure	0.15 MPa ... 0.8 MPa
Pilot pressure	1.5 bar ... 8 bar
Suitability for vacuum	no
Switching time off	25 ms
Switching time on	9 ms
Duty cycle	100%
Max. positive test pulse with 0 signal	700 µs
Max. negative test pulse with 1 signal	900 µs
Characteristic coil data	24 V DC: 1.0 W 24 V DC: low-current phase 0.3 W, high-current phase 1.0 W
Permissible voltage fluctuations	+/- 10 %

Feature	Value
Operating medium	Compressed air to ISO 8573-1:2010 [7:4:4]
Note on operating and pilot medium	Lubricated operation possible (in which case lubricated operation will always be required)
Vibration resistance	Transport application test with severity level 2 to FN 942017-4 and EN 60068-2-6
Restrictions for environmental and media temperature	-5 ... 50° C Without holding current reduction
Shock resistance	Shock test with severity level 2 to FN 942017-5 and EN 60068-2-27
Corrosion resistance class CRC	2 - Moderate corrosion stress
LABS (PWIS) conformity	VDMA24364-B1/B2-L
Cleanroom class	Class 5 according to ISO 14644-1
Media temperature	-5 °C ... 60 °C
Ambient temperature	-5 °C ... 60 °C
Product weight	89 g
Electrical connection	Via electrical sub-base
Type of mounting	Either: On manifold rail With through-hole
Pneumatic connection, port 1	G1/8
Pneumatic connection, port 2	G1/8
Pneumatic connection, port 3	G1/8
Pneumatic connection, port 4	G1/8
Pneumatic connection, port 5	G1/8
Note on materials	RoHS-compliant
Material seals	HNBR NBR
Material housing	Wrought aluminium alloy