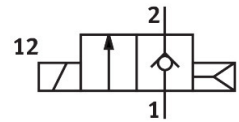
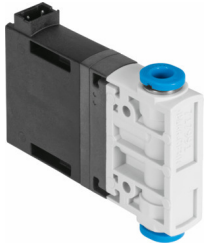


Solenoid valve MHJ9-QS-6-HF/LP

Part number: 567793

FESTO



 General operating condition

Data sheet

Feature	Value
Valve function	2/2-way, closed, monostable
Type of actuation	Electric
Construction width	9 mm
Standard nominal flow rate (standardised to DIN 1343)	160 l/min
pneumatic working port	QS-6
Operating voltage	24V DC
Operating pressure	0.05 MPa ... 0.4 MPa
Operating pressure	0.5 bar ... 4 bar
Operating pressure	7.25 psi ... 58 psi
Design	Poppet valve without spring return
Type of reset	Pneumatic spring
Degree of protection	IP40
Grid dimension	9.5 mm
Note on operation	Do not operate without flow. For block mounting with flow, max. ambient temperature 45°C.
Sealing principle	Hard
Mounting position	optional
Manual override	None
Type of piloting	Direct
Flow direction	Non-reversible
Symbol	00992259
b value	0.36
C value	0.66 l/sbar
Max. switching frequency	500 Hz
Switching time on 0.4 MPa (4 bar, 58 psi) and 24 V in new condition	1 ms
Switching time off 0.4 MPa (4 bar, 58 psi) and 24 V in new condition	0.4 ms
Switching time on 0.4 MPa (4 bar, 58 psi) and 48 V in new condition	0.8 ms
Switching time off 0.4 MPa (4 bar, 58 psi) and 48 V in new condition	0.4 ms
Switching time on 0.4 MPa (4 bar, 58 psi) and 12 V in new condition	1.3 ms
Switching time off 0.4 MPa (4 bar, 58 psi) and 12 V in new condition	0.5 ms
Switching time on 0.05 MPa (0.5 bar, 7.25 psi) and 24 V in new condition	0.8 ms
Switching time off 0.05 MPa (0.5 bar, 7.25 psi) and 24 V in new condition	0.5 ms
Tolerance switching time off	+15%/-25%
Tolerance switching time on	+/-15%
Operational voltage range DC	12 V ... 53 V
Duty cycle	100%

Feature	Value
Note regarding operating voltage	Operation only with connecting cable MHJ9-KMH...
Coil resistance R20	2.5 Ohm
Operating medium	Compressed air to ISO 8573-1:2010 [7:4:4]
Note on operating and pilot medium	Lubricated operation not possible
Restrictions for environmental and media temperature	As a function of switching frequency (see graph)
Corrosion resistance class CRC	2 - Moderate corrosion stress
LABS (PWIS) conformity	VDMA24364-B2-L
Storage temperature	-20 °C ... 50 °C
Permissible solenoid surface temperature	120 °C
Media temperature	-5 °C ... 60 °C
Ambient temperature	-5 °C ... 60 °C
Product weight	30 g
Electrical connection	2-pin Plug KMH
Type of mounting	Either: In-line installation With through-hole
Pneumatic connection, port 1	QS-6
Pneumatic connection, port 2	QS-6
Note on materials	RoHS-compliant
Material seals	HNBR
Material housing	PA-reinforced
Material screws	Steel