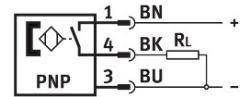
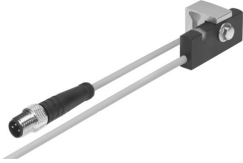


Proximity sensor SMT-C1-PS-24V-K-0,3-M8D

Part number: 571342

FESTO



 [General operating condition](#)

Data sheet

Feature	Value
Design	Block design
Based on standard	EN 60947-5-2
Symbol	00991153
Approval	RCM trademark
CE mark (see declaration of conformity)	To EU EMC Directive In accordance with EU RoHS Directive
UKCA marking (see declaration of conformity)	To UK instructions for EMC To UK RoHS instructions
Note on materials	RoHS-compliant Free of halogen
Instructions on use	Support / actuator-sensor overview "The right sensor for the actuator"
Measured variable	Position
Measuring principle	Magneto-inductive
Ambient temperature	-20 °C ... 70 °C
Switching output	PNP
Switching element function	N/O contact
Hysteresis	≤2 mm
Switch-on time	≤0.5 ms
Switch-off time	≤0.5 ms
Max. output current	200 mA
Max. switching capacity DC	6 W
Voltage drop	<1.8 V
Inductive protective circuit	Adapted to MZ, MY, ME coils
Min. load current	0 mA
Off-state current	<0.1 mA
Short circuit current rating	Pulsed
Overload protection	Available
Rated operational voltage DC	24 V
Operational voltage range DC	10 V ... 30 V
Residual ripple	10 %
Reverse polarity protection	For all electrical connections
Electrical connection 1, connection type	Cable with plug
Electrical connection 1, connector system	M8x1, A-coded, to EN 61076-2-104
Electrical connection 1, number of connections/cores	3
Electrical connection 1, type of mounting	Screw-type lock
Electrical connection 1, connection pattern	00991155

Feature	Value
Connection outlet orientation	In-line
Material electrical contact	Gold-plated brass
Cable length	0.3 m
Cable sheath colour	Grey
Material cable sheath	TPE-O
Type of mounting	Clamped
Tightening torque	1.2 Nm
Mounting position	optional
Product weight	24.4 g
Housing colour	Black
Material housing	PP TPE-O TPE-U(PU) High-alloy stainless steel
Switching status indication	Yellow LED
Ambient temperature with moving cable	-20 °C ... 70 °C
Degree of protection	IP65 IP68 To IEC 60529
LABS (PWIS) conformity	VDMA24364-B2-L
Suitable for use with food	See supplementary material information