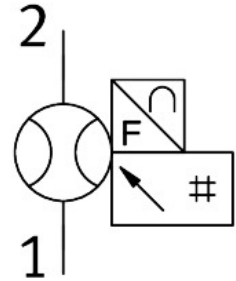


Flow sensor SFAM-90-10000L-M-2SV-M12

Part number: 573349

FESTO



 General operating condition

Data sheet

| Feature | Value |
|--|---|
| Symbol | 00992242 00997566 |
| Approval | RCM trademark c UL us - Recognized (OL) |
| CE mark (see declaration of conformity) | To EU EMC Directive In accordance with EU RoHS Directive |
| UKCA marking (see declaration of conformity) | To UK instructions for EMC To UK RoHS instructions |
| Certificate issuing authority | UL E322346 |
| Note on materials | RoHS-compliant |
| Measured variable | Volume Volumetric flow rate |
| Flow direction | Unidirectional From left to right |
| Measuring principle | Thermal |
| Measurement method | Heat Loss |
| Start value for flow rate measuring range | 100 l/min |
| End value for flow rate measuring range | 10000 l/min |
| Operating pressure | 1.6 MPa |
| Operating pressure | 16 bar |
| Operating pressure | 232 psi |
| Overload pressure | 2 MPa |
| Overload pressure | 20 bar |
| Overload pressure | 290 psi |
| Operating medium | Compressed air to ISO 8573-1:2010 [7:4:4] Nitrogen |
| Media temperature | 0 °C ... 50 °C |
| Ambient temperature | 0 °C ... 50 °C |
| Nominal temperature | 23 °C |
| Accuracy of flow rate | ± (3% o.m.v. + 0.3% FS) |
| Repetition accuracy offset in ± %FS | 0.2 %FS |
| Repetition accuracy span in ± %FS | 0.8 %FS |
| Temperature coefficient span in ± %FS/K | Typ. 0.1%FS/K |

| Feature | Value |
|--|---|
| Pressure influence span in \pm %FS/bar | 0.5 %FS/b. |
| Switching output | 2 x PNP or 2 x NPN, switchable |
| Switching function | Window comparator or threshold value comparator, adjustable |
| Switching element function | N/C or N/O contact, switchable |
| Max. output current | 100 mA |
| Analogue output | 0 - 10 V |
| Flow characteristic curve start value | 0 l/min |
| Flow characteristic curve end value | 10000 l/min |
| Output characteristic curve start value | 0 V |
| Output characteristic curve end value | 10 V |
| Min. load resistance voltage output | 10 kOhm |
| Short circuit current rating | yes |
| Overload protection | Available |
| Operational voltage range DC | 15 V ... 30 V |
| Reverse polarity protection | For all electrical connections |
| Electrical connection 1, connection type | Plugs |
| Electrical connection 1, connector system | M12x1, A-coded to EN 61076-2-101 |
| Electrical connection 1, number of connections/cores | 5 |
| Electrical connection 1, type of mounting | Screw-type lock |
| Electrical connection 1, compatible type of mounting | Compatible with rotatable screw-type lock |
| Electrical connection 1, connection pattern | 00995383 |
| Max. cable length | 30 m |
| Type of mounting | On service unit |
| Mounting position | Horizontal |
| Pneumatic connection | Manifold module |
| Product weight | 1500 g |
| Material housing | Die-cast aluminium PA-reinforced |
| Display type | Illuminated LCD, multi-colour |
| Displayable units | l l/min m ³ scf scfm |
| Setting options | Teach-in Via display and keys |
| Protection against tampering | PIN code |
| Setting range threshold value | 1 % ... 100 % |
| Setting range hysteresis | 0 % ... 90 % |
| Degree of protection | IP65 |
| Pressure drop | <100 mbar |
| Protection class | III |
| Corrosion resistance class CRC | 2 - Moderate corrosion stress |
| LABS (PWIS) conformity | VDMA24364-B1/B2-L |