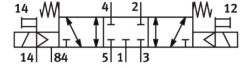
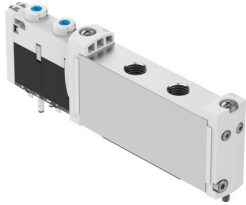


# Solenoid valve

## VUVG-S14-P53C-ZT-G18-1T1L

FESTO

Part number: 573473



[General operating condition](#)

## Data sheet

| Feature   | Value                                     |
|---|---|
| Valve function  | 5/3 closed                                |
| Type of actuation                                     | Electric                                  |
| Valve size  | 14 mm                                     |
| Standard nominal flow rate (standardised to DIN 1343) | 590 l/min                                 |
| pneumatic working port                                | G1/8                                      |
| Operating voltage                                     | 24V DC                                    |
| Operating pressure                                    | -0.09 MPa ... 1 MPa                       |
| Operating pressure                                    | -0.9 bar ... 10 bar                       |
| Design  | Piston gate valve                         |
| Type of reset   | Mechanical spring                         |
| Approval  | c UL us - Recognized (OL)                 |
| Degree of protection                                  | IP65<br>IP67                              |
| Exhaust-air function                                  | With flow control option                  |
| Sealing principle                                     | Soft                                      |
| Mounting position                                     | optional                                  |
| Manual override                                       | Detenting<br>Non-detenting                |
| Type of piloting                                      | Pilot actuated                            |
| Pilot air supply                                      | External                                  |
| Flow direction  | Reversible                                |
| Symbol  | 00991126                                  |
| lap   | Overlap                                   |
| Signal status display                                 | LED                                       |
| Pilot pressure  | 0.3 MPa ... 0.8 MPa                       |
| Pilot pressure  | 3 bar ... 8 bar                           |
| Max. switching frequency                              | 3 Hz                                      |
| Switching time off                                    | 42 ms                                     |
| Switching time on                                     | 15 ms                                     |
| Switching time reversal                               | 25 ms                                     |
| Duty cycle  | 100%                                      |
| Max. positive test pulse with 0 signal                | 1600 µs                                   |
| Max. negative test pulse with 1 signal                | 3000 µs                                   |
| Characteristic coil data                              | 22 V DC: 1.0 W                            |
| Permissible voltage fluctuations                      | +/- 10 %                                  |
| Operating medium                                      | Compressed air to ISO 8573-1:2010 [7:4:4] |

| <b>Feature</b>                     | <b>Value</b>   |
|------------------------------------|--|
| Note on operating and pilot medium | Lubricated operation possible (in which case lubricated operation will always be required) |
| Vibration resistance               | Transport application test with severity level 2 to FN 942017-4 and EN 60068-2-6           |
| Shock resistance                   | Shock test with severity level 2 to FN 942017-5 and EN 60068-2-27                          |
| Corrosion resistance class CRC     | 2 - Moderate corrosion stress  |
| LABS (PWIS) conformity             | VDMA24364-B1/B2-L  |
| Media temperature                  | -5 °C ... 60 °C  |
| Pilot medium                       | Compressed air to ISO 8573-1:2010 [7:4:4]  |
| Ambient temperature                | -5 °C ... 60 °C  |
| Product weight                     | 95 g   |
| Electrical connection              | Via sub-base   |
| Type of mounting                   | On manifold rail   |
| Pneumatic connection, port 2       | G1/8   |
| Pneumatic connection, port 4       | G1/8   |
| Note on materials                  | RoHS-compliant   |
| Material seals                     | HNBR<br>NBR  |
| Material housing                   | Wrought aluminium alloy  |