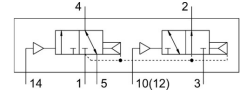


Pneumatic valve VUWG-L10-T32H-A-M5

Part number: 573807

FESTO



[PDF General operating condition](#)

Data sheet

Feature	Value
Valve function	2x3/2-way, open/closed, monostable
Type of actuation	Pneumatic
Valve size	10 mm
Standard nominal flow rate (standardised to DIN 1343)	150 l/min
pneumatic working port	M5
Operating pressure	1.5 bar ... 10 bar
Design	Piston gate valve
Type of reset	Pneumatic spring
Grid dimension	10.5 mm
Exhaust-air function	With flow control option
Sealing principle	Soft
Mounting position	optional
Manual override	None
Type of piloting	Direct
Flow direction	Reversible with restrictions
Symbol	00992935
lap	Overlap
Pilot pressure	1.5 bar ... 10 bar
Suitability for vacuum	no
Switching time off	9 ms
Switching time on	4 ms
Operating medium	Compressed air to ISO 8573-1:2010 [7:4:4]
Note on operating and pilot medium	Lubricated operation possible (in which case lubricated operation will always be required)
Corrosion resistance class CRC	2 - Moderate corrosion stress
LABS (PWIS) conformity	VDMA24364-B1/B2-L
Cleanroom class	Class 5 according to ISO 14644-1
Media temperature	-5 °C ... 50 °C
Pilot medium	Compressed air to ISO 8573-1:2010 [7:4:4]
Ambient temperature	-5 °C ... 60 °C
Product weight	48 g
Type of mounting	Either: On PR rail With through-hole
Pilot air port 12	M5
Pilot air port 14	M5

Feature	Value
Pneumatic connection, port 1	M5
Pneumatic connection, port 2	M5
Pneumatic connection, port 3	M5
Pneumatic connection, port 4	M5
Pneumatic connection, port 5	M5
Note on materials	RoHS-compliant
Material seals	HNBR NBR
Material housing	Anodised