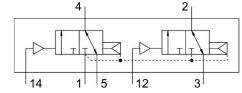


# Pneumatic valve VUWG-L14-T32C-A-G18

Part number: 573829

FESTO



[PDF General operating condition](#)

## Data sheet

| Feature   | Value  |
|---|--|
| Valve function  | 2x3/2-way, monostable, closed  |
| Type of actuation                                     | Pneumatic  |
| Valve size  | 14 mm  |
| Standard nominal flow rate (standardised to DIN 1343) | 650 l/min  |
| pneumatic working port                                | G1/8   |
| Operating pressure                                    | 1.5 bar ... 10 bar   |
| Design  | Piston gate valve  |
| Type of reset   | Pneumatic spring   |
| Grid dimension  | 16 mm  |
| Exhaust-air function                                  | With flow control option   |
| Sealing principle                                     | Soft   |
| Mounting position                                     | optional   |
| Manual override                                       | None   |
| Type of piloting                                      | Direct   |
| Flow direction  | Reversible with restrictions   |
| Symbol  | 00992930   |
| lap   | Overlap  |
| Pilot pressure  | 1.5 bar ... 10 bar   |
| Suitability for vacuum                                | no   |
| Switching time off                                    | 19 ms  |
| Switching time on                                     | 6 ms   |
| Operating medium                                      | Compressed air to ISO 8573-1:2010 [7:4:4]  |
| Note on operating and pilot medium                    | Lubricated operation possible (in which case lubricated operation will always be required) |
| Corrosion resistance class CRC                        | 2 - Moderate corrosion stress  |
| LABS (PWIS) conformity                                | VDMA24364-B1/B2-L  |
| Cleanroom class                                       | Class 5 according to ISO 14644-1   |
| Media temperature                                     | -5 °C ... 50 °C  |
| Pilot medium  | Compressed air to ISO 8573-1:2010 [7:4:4]  |
| Ambient temperature                                   | -5 °C ... 60 °C  |
| Product weight  | 81 g   |
| Type of mounting                                      | Either:<br>On PR rail<br>With through-hole   |
| Pilot air port 12                                     | M5   |
| Pilot air port 14                                     | M5   |

| <b>Feature</b>               | <b>Value</b>   |
|------------------------------|----------------|
| Pneumatic connection, port 1 | G1/8           |
| Pneumatic connection, port 2 | G1/8           |
| Pneumatic connection, port 3 | G1/8           |
| Pneumatic connection, port 4 | G1/8           |
| Pneumatic connection, port 5 | G1/8           |
| Note on materials            | RoHS-compliant |
| Material seals               | HNBR<br>NBR    |
| Material housing             | Anodised       |