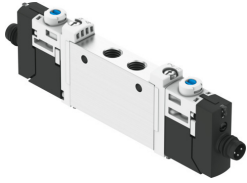


Solenoid valve VUVG-L10-B52-T-M7-1R8L

Part number: 574222

FESTO



 General operating condition

Data sheet

Feature	Value
Valve function	5/2 bistable
Type of actuation	Electric
Valve size	10 mm
Standard nominal flow rate (standardised to DIN 1343)	340 l/min ... 380 l/min
pneumatic working port	M7
Operating voltage	24V DC
Operating pressure	0.15 MPa ... 0.8 MPa
Operating pressure	1.5 bar ... 8 bar
Design	Piston gate valve
Approval	RCM trademark c UL us - Recognized (OL)
Degree of protection	IP65 With plug socket
Nominal size	4 mm
Exhaust-air function	With flow control option
Sealing principle	Soft
Mounting position	optional
Manual override	Detenting Non-detenting Covered
Type of piloting	Pilot actuated
Pilot air supply	Internal
Symbol	00992897
lap	Overlap
Pilot pressure	0.15 MPa ... 0.8 MPa
Pilot pressure	1.5 bar ... 8 bar
Suitability for vacuum	no
Switching time reversal	8 ms
Duty cycle	100%
Max. positive test pulse with 0 signal	700 µs
Max. negative test pulse with 1 signal	900 µs
Characteristic coil data	24 V DC: 1.0 W
Permissible voltage fluctuations	+/- 10 %
Operating medium	Compressed air to ISO 8573-1:2010 [7:4:4]
Note on operating and pilot medium	Lubricated operation possible (in which case lubricated operation will always be required)

Feature	Value
Vibration resistance	Transport application test with severity level 2 to FN 942017-4 and EN 60068-2-6
Restrictions for environmental and media temperature	-5 ... 50° C Without holding current reduction
Shock resistance	Shock test with severity level 2 to FN 942017-5 and EN 60068-2-27
Corrosion resistance class CRC	2 - Moderate corrosion stress
LABS (PWIS) conformity	VDMA24364-B1/B2-L
Cleanroom class	Class 5 according to ISO 14644-1
Media temperature	-5 °C ... 60 °C
Ambient temperature	-5 °C ... 60 °C
Product weight	55 g
Electrical connection	Via electrical sub-base
Type of mounting	Either: On manifold rail With through-hole
Pneumatic connection, port 1	M7
Pneumatic connection, port 2	M7
Pneumatic connection, port 3	M7
Pneumatic connection, port 4	M7
Pneumatic connection, port 5	M7
Note on materials	RoHS-compliant
Material seals	HNBR NBR
Material housing	Wrought aluminium alloy