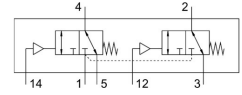


Pneumatic valve VUWG-L10-T32C-M-M7

Part number: 574255

FESTO



[PDF General operating condition](#)

Data sheet

Feature	Value
Valve function	2x3/2-way, monostable, closed
Type of actuation	Pneumatic
Valve size	10 mm
Standard nominal flow rate (standardised to DIN 1343)	150 l/min
pneumatic working port	M7
Operating pressure	-0.9 bar ... 10 bar
Design	Piston gate valve
Type of reset	Mechanical spring
Grid dimension	10.5 mm
Exhaust-air function	With flow control option
Sealing principle	Soft
Mounting position	optional
Manual override	None
Type of piloting	Direct
Flow direction	Reversible
Symbol	00992942
lap	Overlap
Pilot pressure	3 bar ... 10 bar
Suitability for vacuum	yes
Switching time off	7 ms
Switching time on	6 ms
Operating medium	Compressed air to ISO 8573-1:2010 [7:4:4]
Note on operating and pilot medium	Lubricated operation possible (in which case lubricated operation will always be required)
Corrosion resistance class CRC	2 - Moderate corrosion stress
LABS (PWIS) conformity	VDMA24364-B1/B2-L
Cleanroom class	Class 5 according to ISO 14644-1
Media temperature	-5 °C ... 50 °C
Pilot medium	Compressed air to ISO 8573-1:2010 [7:4:4]
Ambient temperature	-5 °C ... 60 °C
Product weight	51 g
Type of mounting	Either: On PR rail With through-hole
Pilot air port 12	M5
Pilot air port 14	M5

Feature	Value
Pneumatic connection, port 1	M7
Pneumatic connection, port 2	M7
Pneumatic connection, port 3	M7
Pneumatic connection, port 4	M7
Pneumatic connection, port 5	M7
Note on materials	RoHS-compliant
Material seals	HNBR NBR
Material housing	Anodised