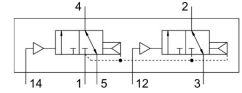


Pneumatic valve VUWG-L18-T32C-A-G14

Part number: 574263

FESTO



[PDF](#) General operating condition

Data sheet

| Feature | Value |
|---|--|
| Valve function | 2x3/2-way, monostable, closed |
| Type of actuation | Pneumatic |
| Valve size | 18 mm |
| Standard nominal flow rate (standardised to DIN 1343) | 1000 l/min |
| pneumatic working port | G1/4 |
| Operating pressure | 1.5 bar ... 10 bar |
| Design | Piston gate valve |
| Type of reset | Pneumatic spring |
| Grid dimension | 19 mm |
| Exhaust-air function | With flow control option |
| Sealing principle | Soft |
| Mounting position | optional |
| Manual override | None |
| Type of piloting | Direct |
| Flow direction | Reversible with restrictions |
| Symbol | 00992930 |
| lap | Overlap |
| Pilot pressure | 1.5 bar ... 10 bar |
| Suitability for vacuum | no |
| Switching time off | 36 ms |
| Switching time on | 12 ms |
| Operating medium | Compressed air to ISO 8573-1:2010 [7:4:4] |
| Note on operating and pilot medium | Lubricated operation possible (in which case lubricated operation will always be required) |
| Corrosion resistance class CRC | 2 - Moderate corrosion stress |
| LABS (PWIS) conformity | VDMA24364-B1/B2-L |
| Cleanroom class | Class 5 according to ISO 14644-1 |
| Media temperature | -5 °C ... 50 °C |
| Pilot medium | Compressed air to ISO 8573-1:2010 [7:4:4] |
| Ambient temperature | -5 °C ... 60 °C |
| Product weight | 160 g |
| Type of mounting | Either: On PR rail With through-hole |
| Pilot air port 12 | M5 |
| Pilot air port 14 | M5 |

| Feature | Value |
|------------------------------|----------------|
| Pneumatic connection, port 1 | G1/4 |
| Pneumatic connection, port 2 | G1/4 |
| Pneumatic connection, port 3 | G1/4 |
| Pneumatic connection, port 4 | G1/4 |
| Pneumatic connection, port 5 | G1/4 |
| Note on materials | RoHS-compliant |
| Material seals | HNBR NBR |
| Material housing | Anodised |