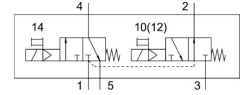
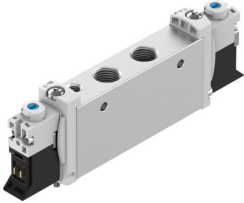


Solenoid valve

VUVG-L14-T32H-MT-G18-1P3

Part number: 574370

FESTO



[PDF General operating condition](#)

Data sheet

| Feature | Value |
|---|--|
| Valve function | 2x3/2-way, open/closed, monostable |
| Type of actuation | Electric |
| Valve size | 14 mm |
| Standard nominal flow rate (standardised to DIN 1343) | 480 l/min ... 500 l/min |
| pneumatic working port | G1/8 |
| Operating voltage | 24V DC |
| Operating pressure | 0.3 MPa ... 0.8 MPa |
| Operating pressure | 3 bar ... 8 bar |
| Design | Piston gate valve |
| Type of reset | Mechanical spring |
| Approval | RCM trademark c UL us - Recognized (OL) |
| Degree of protection | IP40 IP65 With plug socket |
| Nominal size | 4.3 mm |
| Exhaust-air function | With flow control option |
| Sealing principle | Soft |
| Mounting position | optional |
| Manual override | Detenting Non-detenting Covered |
| Type of piloting | Pilot actuated |
| Pilot air supply | Internal |
| Symbol | 00995243 |
| lap | Overlap |
| Pilot pressure | 0.35 MPa ... 0.8 MPa |
| Pilot pressure | 3.5 bar ... 8 bar |
| Suitability for vacuum | no |
| Switching time off | 18 ms |
| Switching time on | 12 ms |
| Duty cycle | 100% |
| Max. positive test pulse with 0 signal | 700 µs |
| Max. negative test pulse with 1 signal | 900 µs |
| Characteristic coil data | 24 V DC: 1.0 W 24 V DC: low-current phase 0.3 W, high-current phase 1.0 W |
| Permissible voltage fluctuations | +/- 10 % |

| Feature | Value |
|--|--|
| Operating medium | Compressed air to ISO 8573-1:2010 [7:4:4] |
| Note on operating and pilot medium | Lubricated operation possible (in which case lubricated operation will always be required) |
| Vibration resistance | Transport application test with severity level 2 to FN 942017-4 and EN 60068-2-6 |
| Restrictions for environmental and media temperature | -5 ... 50° C Without holding current reduction |
| Shock resistance | Shock test with severity level 2 to FN 942017-5 and EN 60068-2-27 |
| Corrosion resistance class CRC | 2 - Moderate corrosion stress |
| LABS (PWIS) conformity | VDMA24364-B1/B2-L |
| Cleanroom class | Class 5 according to ISO 14644-1 |
| Media temperature | -5 °C ... 60 °C |
| Ambient temperature | -5 °C ... 60 °C |
| Product weight | 80 g |
| Electrical connection | Via electrical sub-base |
| Type of mounting | Either: On manifold rail With through-hole |
| Pneumatic connection, port 1 | G1/8 |
| Pneumatic connection, port 2 | G1/8 |
| Pneumatic connection, port 4 | G1/8 |
| Pneumatic connection, port 5 | G1/8 |
| Note on materials | RoHS-compliant |
| Material seals | HNBR NBR |
| Material housing | Wrought aluminium alloy |