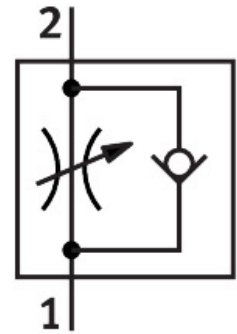


# One-way flow control valve VFOH-LE-A-G18-Q4

Part number: 578797

FESTO



 [General operating condition](#)

## Data sheet

Feature	Value
Valve function	Exhaust air one-way flow control function
Pneumatic connection, port 1	QS-4
Pneumatic connection, port 2	G1/8
Type of actuation	Manual
Adjustment component	External hex
Type of mounting	Screw-in
Standard nominal flow rate in flow control direction	180 l/min
Standard nominal flow rate in blocked direction	103 l/min ... 188 l/min
Ambient temperature	0 °C ... 150 °C
Mounting position	optional
Symbol	00991452
Operating pressure complete temperature range	0.2 bar ... 10 bar
Standard flow rate in flow control direction 0.6-10 MPa (6-10 bar, 87-10 psi)	250 l/min
Standard flow rate in non-return direction 0.6-10 MPa (6-10 bar, 87-10 psi)	270 l/min ... 300 l/min
Operating medium	Compressed air to ISO 8573-1:2010 [7:4:4]
Note on operating and pilot medium	Lubricated operation possible (in which case lubricated operation will always be required)
LABS (PWIS) conformity	VDMA24364-B2-L
Storage temperature	-10 °C ... 150 °C
Media temperature	0 °C ... 150 °C
Nominal torque	3 Nm
Tolerance for nominal tightening torque	± 10%
Product weight	23 g
Note on materials	RoHS-compliant
Material seals	FPM
Material hollow bolt	Wrought aluminium alloy
Material release ring	Nickel-plated brass
Material adjusting screw	High-alloy stainless steel

Feature	Value
Material swivel fitting	Brass Nickel-plated