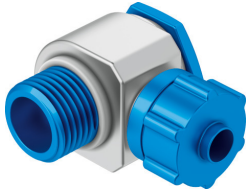


# Elbow quick connector LCK-1/8-PK-4-KU

Part number: 6259

FESTO



 [General operating condition](#)

## Data sheet

| Feature                                       | Value  |
|---|--|
| Nominal size                                  | 3.4 mm   |
| Type of seal on screwed plug                  | Sealing edge   |
| Mounting position                             | optional   |
| Design  | L-shape  |
| Size of pack                                  | 10   |
| Operating pressure complete temperature range | -0.095 MPa ... 1 MPa   |
| Operating pressure complete temperature range | -0.95 bar ... 10 bar   |
| Operating pressure complete temperature range | -13.775 psi ... 145 psi  |
| Operating medium                              | Compressed air to ISO 8573-1:2010 [7:-:-]  |
| Note on operating and pilot medium            | Lubricated operation possible  |
| Corrosion resistance class CRC                | 2 - Moderate corrosion stress  |
| LABS (PWIS) conformity                        | VDMA24364-B1/B2-L  |
| Ambient temperature                           | -10 °C ... 60 °C   |
| Pneumatic connection, port 1                  | Male thread G1/8   |
| Pneumatic connection, port 2                  | For tubing outside diameter of 6 mm<br>For barbed fitting inside diameter of 4 mm with nut |
| Material union nut                            | POM  |
| Note on materials                             | RoHS-compliant   |
| Material hollow bolt                          | Wrought aluminium alloy, anodised  |
| Material swivel fitting                       | POM  |