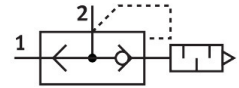


Quick exhaust valve SEU-1/2

Part number: 6822

FESTO



[PDF](#) General operating condition

Data sheet

Feature	Value
Valve function	Quick exhaust
Selection of additional functions	With silencer
Pneumatic connection, port 1	G1/2
Pneumatic connection, port 2	G1/2
Type of mounting	Screw-in
Standard nominal flow rate, exhaust 0.6-0.5 MPa (6-5 bar, 87-72.5 psi)	4020 l/min
Standard nominal flow rate, exhaust 0.6-0 MPa (6-0 bar, 87-0 psi)	6500 l/min
Standard nominal flow rate, air flow 0.6-0.5 MPa (6-5 bar, 87-72.5 psi)	4560 l/min
Operating pressure	0.3 bar ... 10 bar
Ambient temperature	-20 °C ... 75 °C
Material housing	Die-cast aluminium
Operating medium	Compressed air to ISO 8573-1:2010 [7:-:-]
Nominal size	15 mm
Mounting position	optional
Symbol	00991460
Note on operating and pilot medium	Lubricated operation possible (in which case lubricated operation will always be required)
LABS (PWIS) conformity	VDMA24364-B1/B2-L
Media temperature	-20 °C ... 75 °C
Sound pressure level	86 dB(A)
Product weight	320 g
Material seals	NBR