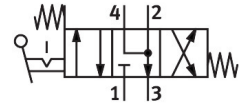


Finger lever valve H-4/3-M5

Part number: 7334

FESTO



[PDF](#) General operating condition

Data sheet

| Feature | Value |
|---|-------------------|
| Valve function | 4/3 exhausted |
| Type of actuation | Manual |
| Standard nominal flow rate (standardised to DIN 1343) | 125 l/min |
| pneumatic working port | M5 |
| Operating pressure | 0 bar ... 8 bar |
| Type of reset | Mechanical spring |
| Nominal size | 4 mm |
| Sealing principle | Soft |
| Type of piloting | Pilot actuated |
| Flow direction | Non-reversible |
| Symbol | 00991329 |
| LABS (PWIS) conformity | VDMA24364-B1/B2-L |
| Pneumatic connection, port 1 | M5 |
| Pneumatic connection, port 2 | M5 |
| Pneumatic connection, port 3 | Not ducted |