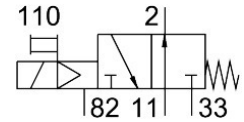
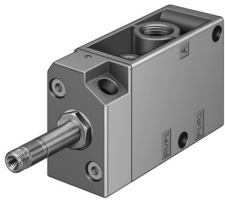


Solenoid valve MOFH-3-1/4

Part number: 7876

FESTO



General operating condition

Data sheet

| Feature | Value |
|---|--|
| Valve function | 3/2 open, monostable |
| Type of actuation | Electric |
| Construction width | 30.5 mm |
| Standard nominal flow rate (standardised to DIN 1343) | 800 l/min |
| pneumatic working port | G1/4 |
| Operating voltage | Via solenoid coil, must be ordered separately |
| Operating pressure | 0.15 MPa ... 0.8 MPa |
| Operating pressure | 1.5 bar ... 8 bar |
| Design | Poppet seat |
| Type of reset | Mechanical spring |
| Approval | c UL us - Recognized (OL) |
| Degree of protection | IP65 |
| Nominal size | 7 mm |
| Grid dimension | 32 mm |
| Exhaust-air function | With flow control option |
| Sealing principle | Soft |
| Mounting position | optional |
| Manual override | Detenting |
| Type of piloting | Pilot actuated |
| Flow direction | Non-reversible |
| Symbol | 00995429 |
| lap | Underlap |
| Switching time off | 41 ms |
| Switching time on | 14 ms |
| Max. positive test pulse with 0 signal | 2200 µs |
| Max. negative test pulse with 1 signal | 3700 µs |
| Characteristic coil data | See solenoid coil, to be ordered separately |
| Operating medium | Compressed air to ISO 8573-1:2010 [7:4:4] |
| Note on operating and pilot medium | Lubricated operation possible (in which case lubricated operation will always be required) |
| Corrosion resistance class CRC | 1 - Low corrosion stress |
| LABS (PWIS) conformity | VDMA24364-B1/B2-L |
| Storage temperature | -20 °C ... 60 °C |
| Media temperature | -10 °C ... 60 °C |
| Ambient temperature | -5 °C ... 40 °C |
| Product weight | 320 g |

| Feature | Value |
|-------------------------------|--|
| Electrical connection | Via F coil, to be ordered separately |
| Type of mounting | Either: On manifold rail With through-hole |
| Pilot exhaust port 82 | M5 |
| Pneumatic connection, port 1 | G1/4 |
| Pneumatic connection, port 11 | G1/4 |
| Pneumatic connection, port 2 | G1/4 |
| Pneumatic connection, port 3 | G1/4 |
| Pneumatic port 33 | G1/4 |
| Note on materials | RoHS-compliant |
| Material seals | NBR |
| Material housing | Die-cast aluminium |