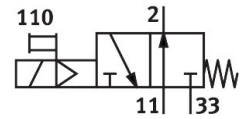
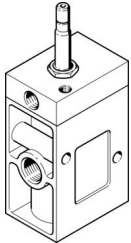


Solenoid valve MOCH-3-1/2

Part number: 7885

FESTO



General operating condition

Data sheet

Feature	Value
Valve function	3/2 open, monostable
Type of actuation	Electric
Construction width	52 mm
Standard nominal flow rate (standardised to DIN 1343)	3700 l/min
pneumatic working port	G1/2
Operating voltage	Via solenoid coil, must be ordered separately
Operating pressure	0.15 MPa ... 1 MPa
Operating pressure	1.5 bar ... 10 bar
Design	Poppet seat
Type of reset	Mechanical spring
Degree of protection	IP65
Nominal size	14 mm
Grid dimension	69 mm
Exhaust-air function	With flow control option
Sealing principle	Soft
Mounting position	optional
Manual override	Detenting
Type of piloting	Pilot actuated
Flow direction	Non-reversible
Symbol	00991017
lap	Underlap
b value	0.3
Switching time off	54 ms
Switching time on	22 ms
Max. positive test pulse with 0 signal	2200 µs
Max. negative test pulse with 1 signal	3700 µs
Characteristic coil data	See solenoid coil, to be ordered separately
Operating medium	Compressed air to ISO 8573-1:2010 [7:4:4]
Note on operating and pilot medium	Lubricated operation possible (in which case lubricated operation will always be required)
Corrosion resistance class CRC	1 - Low corrosion stress
LABS (PWIS) conformity	VDMA24364-B1/B2-L
Storage temperature	-20 °C ... 60 °C
Media temperature	-10 °C ... 60 °C
Ambient temperature	-5 °C ... 40 °C
Product weight	1150 g

Feature	Value
Type of mounting	Either: On manifold rail With through-hole
Pneumatic connection, port 1	G1/2
Pneumatic connection, port 2	G1/2
Pneumatic connection, port 3	G1/2
Note on materials	RoHS-compliant
Material seals	NBR
Material housing	Die-cast aluminium