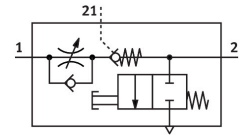


One-way flow control valve VFOF-LE-BAH-G18-Q6

Part number: 8001459

FESTO



[PDF](#) General operating condition

Data sheet

Feature	Value
Valve function	Exhaust air one-way flow control function
Selection of additional functions	Actuated non-return valve
Pneumatic connection, port 1	QS-6
Pneumatic connection, port 2	G1/8
Type of actuation	Manual
Pilot air port 21	QS-6
Adjustment component	Internal hexagon
Type of mounting	Screw-in
Standard nominal flow rate in flow control direction	240 l/min
Standard nominal flow rate in blocked direction	120 l/min ... 220 l/min
Operating pressure	0.02 MPa ... 1 MPa
Operating pressure	0.2 bar ... 10 bar
Operating pressure	2.9 psi ... 145 psi
Pilot pressure	0.2 MPa ... 1 MPa
Pilot pressure	2 bar ... 10 bar
Ambient temperature	-10 °C ... 60 °C
Pilot pressure	29 psi ... 145 psi
Material housing	PBT
Explosion protection	Zone 2 (ATEX) Zone 22 (ATEX)
Mounting position	optional
Type act., cont. n.-r. func.	Pneumatic
Manual exhaust function	Non-detenting
Symbol	00991958
Rotatability	360°/no continuous swivelling permissible
Operating pressure complete temperature range	0.02 MPa ... 1 MPa
Operating pressure complete temperature range	0.2 bar ... 10 bar
Operating pressure complete temperature range	2.9 psi ... 145 psi
Standard flow rate in flow control direction 0.6->0 MPa (6->0 bar, 87->0 psi)	420 l/min
Standard flow rate in non-return direction 0.6->0 MPa (6->0 bar, 87->0 psi) actuated	400 l/min ... 460 l/min
Standard flow rate in non-return direction 0.6->0 MPa (6->0 bar, 87->0 psi) non-actuated	400 l/min ... 460 l/min
Standard nominal flow rate in non-return direction actuated	150 l/min ... 230 l/min
Standard nominal flow rate in non-return direction non-actuated	120 l/min ... 220 l/min

Feature	Value
Switching time off	9 ms
Switching time on	6 ms
Operating medium	Compressed air to ISO 8573-1:2010 [7:4:4]
Note on operating and pilot medium	Lubricated operation possible (in which case lubricated operation will always be required)
LABS (PWIS) conformity	VDMA24364-B1/B2-L
Media temperature	-10 °C ... 60 °C
Pilot medium	Compressed air to ISO 8573-1:2010 [7:4:4]
Nominal torque	6 Nm
Tolerance for nominal tightening torque	± 20%
Permissible actuation moment, regulating screw	1 Nm
Product weight	28.6 g
Material covering	ES-BE
Note on materials	RoHS-compliant
Material cover	PBT
Material seals	NBR
Material hollow bolt	Wrought aluminium alloy
Material sleeve	Wrought aluminium alloy
Material release ring	POM
Material adjusting screw	Brass