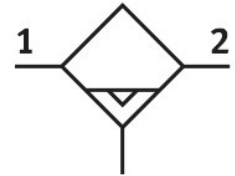


Water separator MS12-LWS-G-U-V

Part number: 8005550

FESTO



 General operating condition

Data sheet

Feature	Value
Size	12
Series	MS
Mounting position	Vertical +/-5°
Condensate drain	Fully automatic
Design	Centrifugal separator
Max. condensate volume	400 ml
Bowl guard	Integrated as metal bowl
Degree of condensate separation	99 %
Symbol	00992244
Operating pressure	2 bar ... 12 bar
Max. standard flow rate	40000 l/min
Standard nominal flow rate (standardised to DIN 1343)	25000 l/min
Operating medium	Compressed air to ISO 8573-1:2010 [7:-:-]
Corrosion resistance class CRC	2 - Moderate corrosion stress
LABS (PWIS) conformity	VDMA24364-B1/B2-L
Storage temperature	5 °C ... 60 °C
Air purity class at output	Compressed air to ISO 8573-1:2010 [7:7:4]
Media temperature	5 °C ... 60 °C
Ambient temperature	5 °C ... 60 °C
Product weight	6.3 g
Type of mounting	Either: In-line installation Via mounting bracket With accessories
Material covering	PA-reinforced
Material spin disc	POM
Note on materials	RoHS-compliant
Material sub-base	Die-cast aluminium
Material mounting bracket	Die-cast aluminium
Material housing	Die-cast aluminium
Material module connector	Die-cast aluminium
Material bowl	Wrought aluminium alloy
Material cup seal	NBR
Material screen	PA
Material separating plate	POM