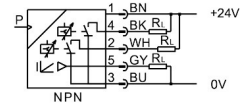


Pressure sensor SPAW-P10R-G14F-2NA-M12

Part number: 8022816

FESTO



[General operating condition](#)

Data sheet

Feature	Value
Symbol	00995379
Approval	RCM trademark c UL us listed (OL)
CE mark (see declaration of conformity)	To EU EMC Directive In accordance with EU RoHS Directive
UKCA marking (see declaration of conformity)	To UK instructions for EMC To UK RoHS instructions
Note on materials	RoHS-compliant
Measured variable	Relative pressure
Measurement method	Metal thin-film pressure sensor
Start value for pressure measuring range	0 MPa
Start value for pressure measuring range	0 bar
Start value for pressure measuring range	0 psi
End value for pressure measuring range	1 MPa
End value for pressure measuring range	10 bar
End value for pressure measuring range	145 psi
Overload pressure	2 MPa
Overload pressure	20 bar
Overload pressure	290 psi
Operating medium	Compressed air to ISO 8573-1:2010 [-:-:-] Liquid media Gaseous media
Media temperature	-20 °C ... 85 °C
Ambient temperature	0 °C ... 80 °C
Accuracy in ± % FS	1 %FS
Repetition accuracy in ± %FS	0.15 %FS
Switching output	2xNPN
Switching function	Freely programmable
Switching element function	Switchable
Max. output current	250 mA
Analogue output	4 - 20 mA
Rise time	3 ms
Short circuit current rating	yes
Operational voltage range DC	15 V ... 35 V
Reverse polarity protection	For operating voltage
Electrical connection 1, connection type	Plugs
Electrical connection 1, connector system	M12x1, A-coded to EN 61076-2-101

Feature	Value
Electrical connection 1, number of connections/cores	5
Electrical connection 1, type of mounting	Screw-type lock Not rotatable
Electrical connection 1, compatible type of mounting	Compatible with rotatable screw-type lock
Electrical connection 1, connection pattern	00995383
Type of mounting	Via female thread With accessories
Mounting position	optional
Pneumatic connection	Female thread G1/4
Product weight	230 g
Material housing	High-alloy stainless steel
Material in contact with the medium	High-alloy stainless steel
Display type	4-place alphanumeric LED indicator
Displayable units	MPa bar kPa kg/cm ² psi
Switching status indication	Red LED
Setting options	Via display and keys
Protection against tampering	PIN code
Setting range threshold value	0.5 % ... 100 %
Setting range hysteresis	0.5 % ... 99.5 %
Degree of protection	IP65 IP67
Corrosion resistance class CRC	4 - Very high corrosion stress
LABS (PWIS) conformity	VDMA24364 zone III