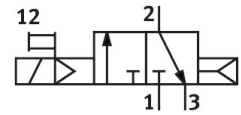
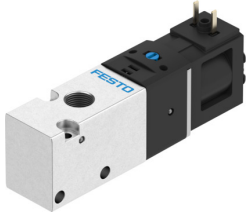


# Solenoid valve

## VUVS-LK20-M32C-AD-G18-1C1-S

Part number: 8043213

FESTO



[PDF General operating condition](#)

## Data sheet

Feature	Value
Valve function	3/2-way, closed, monostable
Type of actuation	Electric
Valve size	21 mm
Standard nominal flow rate (standardised to DIN 1343)	550 l/min
pneumatic working port	G1/8
Operating voltage	24V DC
Operating pressure	0.15 MPa ... 0.8 MPa
Operating pressure	1.5 bar ... 8 bar
Design	Piston gate valve
Type of reset	Pneumatic spring
Degree of protection	IP65 With plug socket To IEC 60529
Nominal size	5.2 mm
Exhaust-air function	With flow control option
Sealing principle	Soft
Mounting position	optional
Manual override	Detenting Non-detenting
Type of piloting	Pilot actuated
Pilot air supply	Internal
Flow direction	Non-reversible
Symbol	00991183
lap	Overlap
b value	0.38
C value	2.66 l/sbar
Switching time off	20 ms
Switching time on	16 ms
Duty cycle	100%
Max. positive test pulse with 0 signal	2700 µs
Max. negative test pulse with 1 signal	1100 µs
Characteristic coil data	24 V DC: 2.4 W
Permissible voltage fluctuations	+/- 10 %
Operating medium	Compressed air to ISO 8573-1:2010 [7:4:4]
Note on operating and pilot medium	Lubricated operation possible (in which case lubricated operation will always be required)

Feature	Value
Vibration resistance	Transport application test with severity level 2 to FN 942017-4 and EN 60068-2-6
Shock resistance	Shock test with severity level 1 to FN 942017-5 and EN 60068-2-27
Corrosion resistance class CRC	1 - Low corrosion stress
LABS (PWIS) conformity	VDMA24364 zone III
Media temperature	-5 °C ... 50 °C
Pilot medium	Compressed air to ISO 8573-1:2010 [7:4:4]
Ambient temperature	-5 °C ... 50 °C
Product weight	120 g
Electrical connection	Type C To EN 175301-803
Type of mounting	Either: On manifold rail With through-hole
Breather connection	Not ducted
Pneumatic connection, port 1	G1/8
Pneumatic connection, port 2	G1/8
Pneumatic connection, port 3	G1/8
Note on materials	RoHS-compliant
Material seals	HNBR NBR
Material housing	Wrought aluminium alloy
Material piston slide	Wrought aluminium alloy