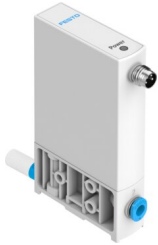


Proportional-pressure regulator VEAB-L-26-D14-Q4-A4-1R1

FESTO

Part number: 8046308



[PDF](#) General operating condition

Data sheet

Feature	Value
Valve function	3-way proportional pressure regulator
Type of piloting	Direct
Type of reset	Mechanical spring
Type of actuation	Electric
Mounting position	optional
Sealing principle	Soft
Total leakage	1 l/h
Symbol	00995607
Ambient temperature	0 °C ... 50 °C
Media temperature	5 °C ... 50 °C
Storage temperature	-20 °C ... 70 °C
Dimensions (W x L x H)	18 x 60.5 x 85 mm
Pneumatic connection, port 1	QS-4
Pneumatic connection, port 2	QS-4
Pneumatic connection, port 3	QS-4
Material seals	NBR
Type of mounting	Either: With through-hole With accessories
Inlet pressure 1	0 MPa
Inlet pressure 1	0 bar
Inlet pressure 1	0 psi
Output pressure 2	-0.1 MPa ... -5.0E-4 MPa
Output pressure 2	-1 bar ... -0.005 bar
Output pressure 2	-14.5 psi ... -0.0725 psi
Input pressure 3	-0.1 MPa
Input pressure 3	-1 bar
Input pressure 3	-14.5 psi
Standard nominal flow rate (standardised to DIN 1343)	≥4.5 l/min
Standard nominal flow rate 2-3	≥3 l/min
Linearity	0.5 %FS
Reproducibility	0.4 %FS
Hysteresis	0.25 %FS
Temperature coefficient	0.05 %/K

Feature	Value
Total accuracy	0.75% FS
Product weight	70 g
Operating medium	Compressed air to ISO 8573-1:2010 [7:4:4] Inert gases
Note on operating and pilot medium	Lubricated operation not possible
Degree of protection	IP65
Approval	RCM trademark
KC mark	KC-EMV
CE mark (see declaration of conformity)	To EU EMC Directive In accordance with EU RoHS Directive
UKCA marking (see declaration of conformity)	To UK instructions for EMC To UK RoHS instructions
Note on materials	RoHS-compliant
LABS (PWIS) conformity	VDMA24364 zone III
Corrosion resistance class CRC	2 - Moderate corrosion stress
Operational voltage range DC	19 V ... 29 V
Nominal operating voltage DC	24 V
Residual ripple	10 %
Setpoint value	4 - 20 mA
Signal range analogue output	4 - 20 mA
Accuracy analogue output in \pm %FS	2 %FS
Max. electrical power consumption	1 W
Reverse polarity protection	For all electrical connections
Short circuit current rating	For all electrical connections
Safety instructions	Safety position VEAA/VEAB: if the electrical power supply fails, the output pressure is maintained unregulated and may rise or fall – valve blocked.
Display type	LED
Electrical connection	4-pin M8x1 Plugs To EN 60947-5-2
Material housing	PA-reinforced