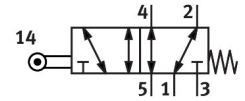


# Roller lever valve VMEF-R-M52-M-G14

Part number: 8047094

FESTO



[PDF](#) General operating condition

## Data sheet

Feature	Value
Valve function	5/2-way, monostable
Type of actuation	Mechanical
Construction width	20 mm
Standard nominal flow rate (standardised to DIN 1343)	1200 l/min
pneumatic working port	G1/4
Operating pressure	-0.095 MPa ... 1 MPa
Operating pressure	-0.95 bar ... 10 bar
Design	Piston gate valve Roller lever
Type of reset	Mechanical spring
Max. stroke limit (hard)	11.6 mm
Nominal size	7 mm
Instructions on use	Risk of pinching
Sealing principle	Soft
Mounting position	optional
Type of piloting	Direct
Flow direction	Reversible
Symbol	00991362
lap	Overlap
Max. actuating speed with lateral actuation	1.4 m/s
Max. switching frequency	3 Hz
Cam angle	30 deg
Explosion protection	Zone 1 (ATEX) Zone 2 (ATEX) Zone 21 (ATEX) Zone 22 (ATEX)
Operating medium	Compressed air to ISO 8573-1:2010 [7:-:-]
Note on operating and pilot medium	Lubricated operation possible (in which case lubricated operation will always be required)
Corrosion resistance class CRC	1 - Low corrosion stress
LABS (PWIS) conformity	VDMA24364-B1/B2-L
Media temperature	-10 °C ... 60 °C
Ambient temperature	-10 °C ... 60 °C
Note on ambient temperature	Influence of heat on wear
Actuating force	38 N
Product weight	272 g
Type of mounting	With through-hole

<b>Feature</b>	<b>Value</b>
Pneumatic connection, port 1	G1/4
Pneumatic connection, port 2	G1/4
Pneumatic connection, port 3	G1/4
Pneumatic connection, port 4	G1/4
Pneumatic connection, port 5	G1/4
Note on materials	RoHS-compliant
Material mounting adaptor	Galvanised steel
Material cover	PA-reinforced
Material seals	NBR
Material housing	Anodised wrought aluminium alloy