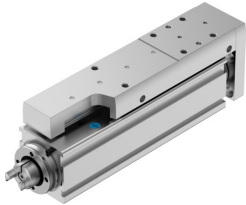


Mini slide EGSC-BS-KF-25-50-6P

Part number: 8048311

FESTO



[PDF](#) General operating condition

Data sheet

Feature	Value
Working stroke	50 mm
Size	25
Stroke reserve	0 mm
Reversing backlash theoretical	150 µm
Spindle diameter	6 mm
Spindle pitch	6 mm/U
Mounting position	optional
Guide	Recirculating ball bearing guide
Design	Electric mini slide With ball screw drive
Type of motor	Stepper motor Servo motor
Referencing	Positive fixed stop block Negative fixed stop block Reference switch
Spindle type	Ball screw drive
Symbol	00992069
Position detection	Via proximity switch
Max. acceleration	15 m/s ²
Max. rotational speed	4000 rpm
Max. speed	0.4 m/s
Repetition accuracy	±0.015 mm
Duty cycle	100%
Corrosion resistance class CRC	0 - No corrosion stress
LABS (PWIS) conformity	VDMA24364 zone III
Suitability for the production of Li-ion batteries	Suitable for battery production according to the Festo internal definition of the degree of severity F1A with restrictions regarding the use of Cu/Zn/Ni
Cleanroom class	Class 9 according to ISO 14644-1
Sound pressure level	50 dB(A)
Degree of protection	IP40
Ambient temperature	0 °C ... 50 °C
Impact energy in end positions	0 J
Note on the impact energy in the end positions	At maximum homing speed of 0.01 m/s
Dynamic basic load rating fixed bearing	2810 N
Dynamic basic load rating linear guide	1310 N
Dynamic basic load rating ball screw	1700 N

Feature	Value
Idle torque at v _{max}	0.029 Nm
Idle torque at v _{min}	0.015 Nm
Max. force F _y	669 N
Max. force F _z	669 N
F _y at theoretical life value of 100 km (only guide consideration)	1310 N
F _z at theoretical life value of 100 km (only guide consideration)	1310 N
Max. moment M _x	2 Nm
Max. moment M _y	2.1 Nm
Max. moment M _z	2.1 Nm
M _x at theoretical life value of 100 km (only guide consideration)	5 Nm
M _y at theoretical life value of 100 km (only guide consideration)	4 Nm
M _z at theoretical life value of 100 km (only guide consideration)	4 Nm
Max. radial force at drive shaft	30 N
Max. feed force F _x	20 N
Reference value effective load, horizontal	2 kg
Reference value effective load, vertical	2 kg
Static basic load rating ball screw	2600 N
Static basic load rating linear guide	2440 N
Mass moment of inertia J _H per metre of stroke	0.01507 kgcm ²
Mass moment of inertia J _L per kg of working load	0.00912 kgcm ²
Mass moment of inertia J _O	0.00144 kgcm ²
Feed constant	6 mm/U
Static basic load rating fixed bearing	1340 N
Reference service life	5000 km
Maintenance interval	Life-time lubrication
Moving mass for 0 mm stroke	83 g
Additional moving mass per 10 mm stroke	9 g
Product weight	269 g
Basic weight for 0 mm stroke	176 g
Additional weight per 10 mm stroke	19 g
Type of mounting	Via female thread Via centring sleeve With accessories Via cylindrical pin
Interface code, actuator	V20
Note on materials	RoHS-compliant
Material guide slide	Rolled steel
Material guide rail	Rolled steel
Material housing	Anodised wrought aluminium alloy
Material yoke plate	Anodised wrought aluminium alloy
Material piston rod	High-alloy stainless steel
Material slide	Anodised wrought aluminium alloy
Material spindle nut	Rolled steel
Material spindle	Rolled steel